

Name: _____

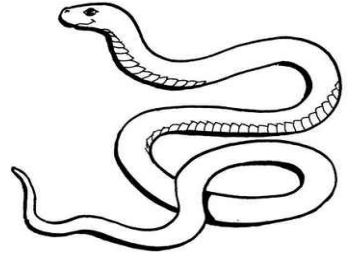
A-Maze-ing Snakes

Puzzle by Guy Belleranti

First: Find your way through the maze by connecting letters to spell out the following words.

ADDER	BLACK MAMBA	BOA	BULLSNAKE
COBRA	CORN KINGSNAKE	PYTHON	RATTLESNAKE

You may move forward, backward, up or down, but no letter may be connected more than once.



Second: Write the remaining unconnected letters in order in the blank spaces to spell out an interesting fact.

Start

A	D	A	S	C	K	M	N	A	K	B	U	L	E	H	A
D	E	S	A	N	A	M	O	E	A	Y	L	E	L	I	
D	R	B	L	S	A	B	A	B	O	N	S	N	D	C	
A	N	T	S	H	U	T	I	T	S	E	Y	A	K	E	
E	S	A	C	L	E	G	N	I	A	R	S	C	O	C	
A	L	E	P	R	O	S	T	K	N	E	A	R	B	C	
T	S	E	A	C	H	N	E	Y	R	O	C	E	T	H	
E	S	E	S	C	K	A	A	L	E	S	A	E	S	R	
F	S	H	F	D	F	W	H	F	N	T	H	I	N	F	



PREVIEW

Please log in or register to download the printable version of this worksheet.

Inter

ANSWER KEY

A-Maze-ing Snakes

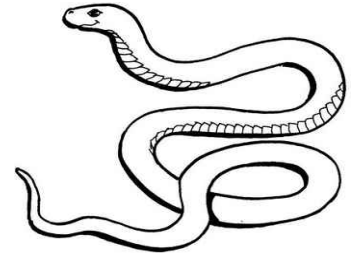
Puzzle by Guy Belleranti

First: Find your way through the maze by connecting letters to spell out the following words.

ADDER	BLACK MAMBA	BOA	BULLSNAKE
COBRA	CORN KINGSNAKE	PYTHON	RATTLESNAKE

You may move forward, backward, up or down, but no letter may be connected more than once.

Second: Write the remaining unconnected letters in order in the blank spaces to spell out an interesting fact.



Start



PREVIEW

Please log in or register to download the printable version of this worksheet.



Finish

Interesting facts about snakes:

A SNAKE HAS NO EYELIDS AND CAN'T SHUT ITS EYES.

A CLEAR SCALE PROTECTS EACH EYE.

THESE SCALES ARE SHED WHEN A SNAKE SHEDS ITS SKIN.