

Name: _____

Multiple Addends

Find the sums.

a.

$$\begin{array}{r} 2, 377 \\ 4, 785 \\ + 2, 388 \\ \hline \end{array}$$

b.

$$\begin{array}{r} 6, 959 \\ 480 \\ + 1, 552 \\ \hline \end{array}$$



Preview

Please log in to download the printable version of this worksheet.

g.

$$\begin{array}{r} 4 \\ 65 \\ 789 \\ + 1, 234 \\ \hline \end{array}$$

h.

$$\begin{array}{r} 7, 130 \\ 823 \\ 6, 782 \\ + 3, 355 \\ \hline \end{array}$$

i.

$$\begin{array}{r} \$3, 670 \\ 4, 540 \\ 611 \\ + 354 \\ \hline \end{array}$$

j.

$$\begin{array}{r} \$3, 434 \\ 4, 343 \\ 8, 686 \\ + 868 \\ \hline \end{array}$$

k. The International Space Station orbits the Earth 5,475 times each year. Write an addition problem to find out how many times it orbits the Earth in four years.

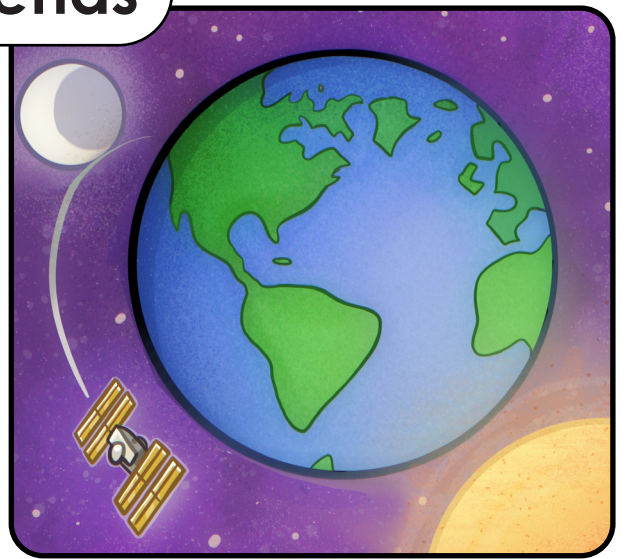
ANSWER KEY

Multiple Addends

Find the sums.

$$\begin{array}{r} \text{a.} \quad 2, 3 7 7 \\ \quad 4, 7 8 5 \\ + 2, 3 8 8 \\ \hline 9, 5 5 0 \end{array}$$

$$\begin{array}{r} \text{b.} \quad 6, 9 5 9 \\ \quad 4 8 0 \\ + 1, 5 5 2 \\ \hline 8, 9 9 1 \end{array}$$



Preview

Please log in to download the printable version of this worksheet.

$$\begin{array}{r} \text{g.} \quad 4 \\ \quad 6 5 \\ \quad 7 8 9 \\ + 1, 2 3 4 \\ \hline 2, 0 9 2 \end{array}$$

$$\begin{array}{r} \text{h.} \quad 7, 1 3 0 \\ \quad 8 2 3 \\ \quad 6, 7 8 2 \\ + 3, 3 5 5 \\ \hline 1 8, 0 9 0 \end{array}$$

$$\begin{array}{r} \text{i.} \quad \$3, 6 7 0 \\ \quad 4, 5 4 0 \\ \quad 6 1 1 \\ + \quad 3 5 4 \\ \hline \$9, 1 7 5 \end{array}$$

$$\begin{array}{r} \text{j.} \quad \$3, 4 3 4 \\ \quad 4, 3 4 3 \\ \quad 8, 6 8 6 \\ + \quad 8 6 8 \\ \hline \$1 7, 3 3 1 \end{array}$$

k. The International Space Station orbits the Earth 5,475 times each year. Write an addition problem to find out how many times it orbits the Earth in four years.

$$\begin{array}{r} 5,475 \\ 5,475 \\ 5,475 \\ + 5,475 \\ \hline 21,900 \text{ times} \end{array}$$