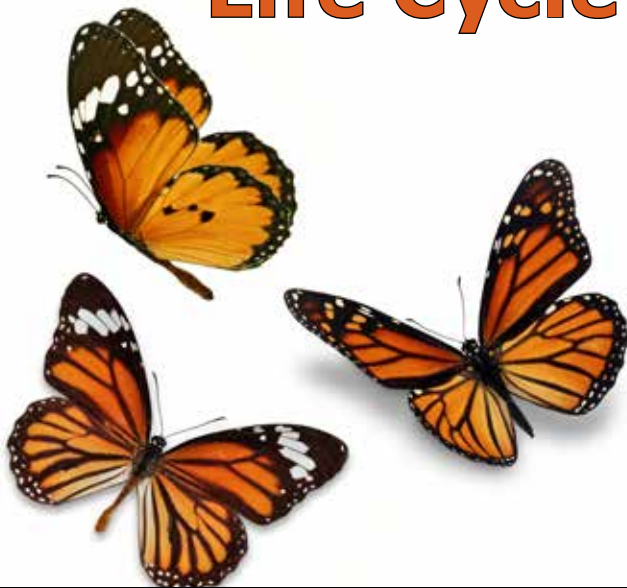


Butterfly Life Cycle



STAPLE

STAPLE



1



Preview

Please log in to download the printable version of this worksheet.



STAPLE

STAPLE

Next comes the larva stage. Butterfly larvae are called caterpillars. Caterpillars eat leaves.



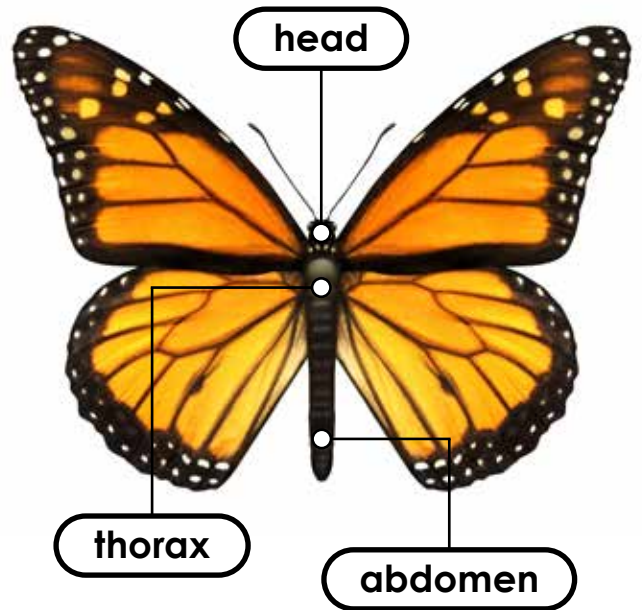
Soon the caterpillar moves on to the pupa stage. A butterfly pupa is called a chrysalis. During this stage its body is changing.

4



Next the butterfly comes out of the chrysalis stage. Its wings are

5

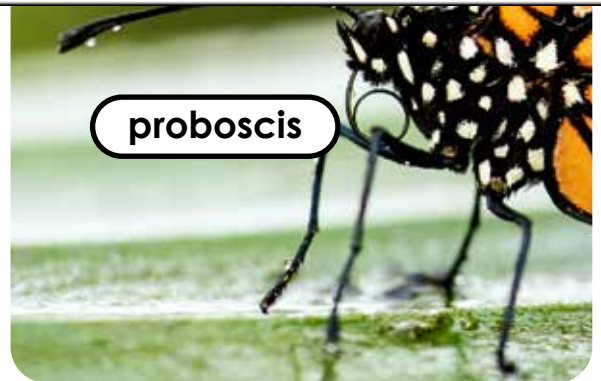


Preview

Please log in to download the printable version of this worksheet.



The butterfly has six legs, four wings, and two antennae.



On its head the butterfly has a proboscis. This is a long, thin straw that is used to sip nectar from flowers. The proboscis is curled up when the butterfly is not using it.