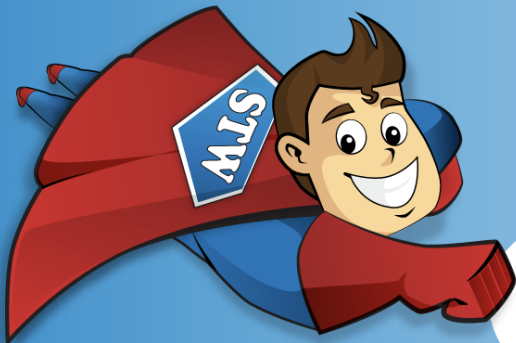
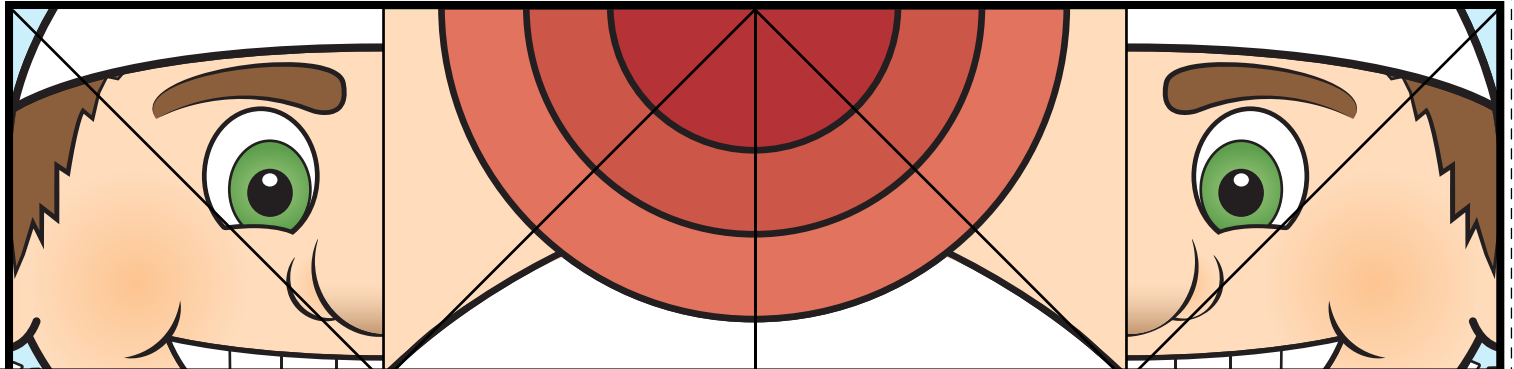
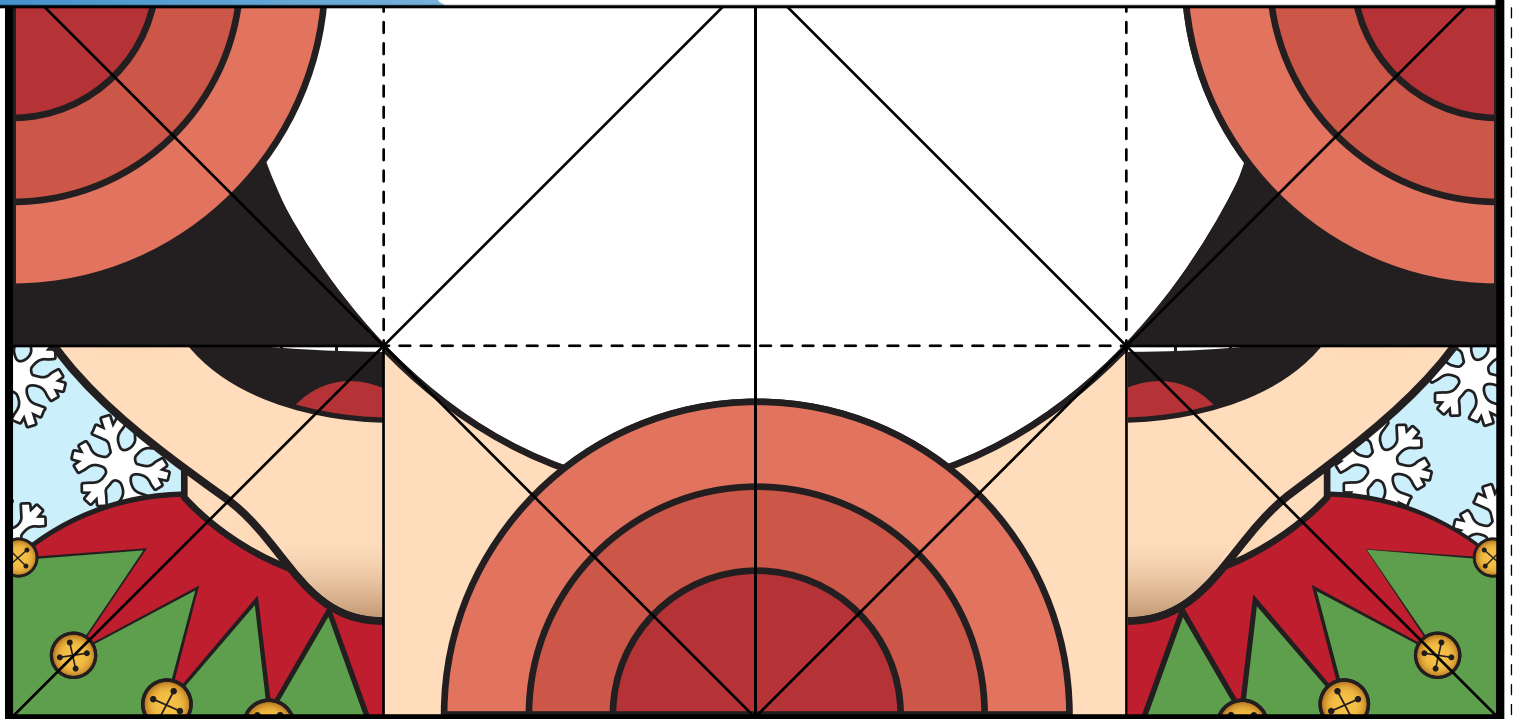


# Cootie Catcher Puppet



## Preview

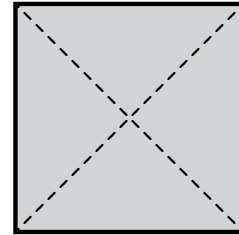
Please log in to download  
the printable version of this worksheet.



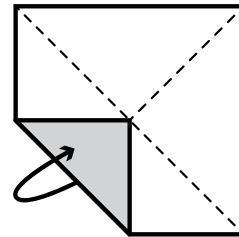
# Cootie Catcher Puppet

## How to make the Cootie Catcher:

1. Cut out your cootie catcher. Place the square face up and fold and unfold the square in diagonals from corner to corner so you end up with x shaped creases.



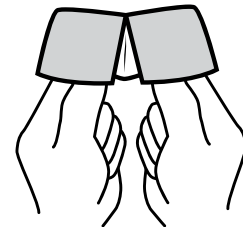
2. Place the square facedown and fold each of the four corners in so the points meet in the center.



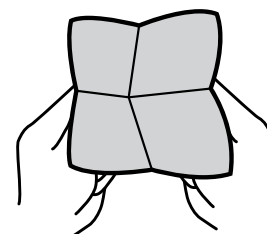
# Preview

Please log in to download  
the printable version of this worksheet.

5. Slide both thumbs and index fingers under the four flaps.

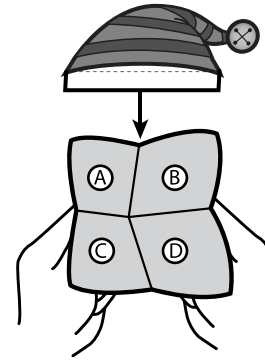


6. Pinch the top corners together with the thumbs and fingers under the flaps to form a point.

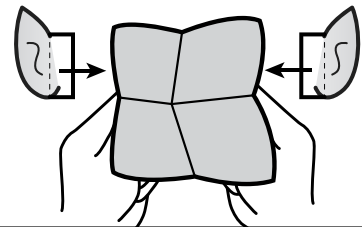


# Cootie Catcher Puppet

7. Glue or paperclip A to B and C to D. Cut out the elf's hat and glue it to the backside of the head.



7. Cut out the elf's ears and glue one to each side of the head.



## Preview

Please log in to download the printable version of this worksheet.

