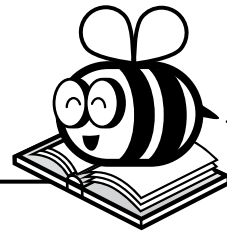




Name: \_\_\_\_\_



# ELA Buzz

Add a comma to make the date correct.

July 17 1993



Circle the adjective that best completes the sentence.

many                  soft                  sunny

The teddy bear is \_\_\_\_\_.

Put these words in alphabetical order.

Alliteration is when two or more words in a sentence start with the same sound.



# Preview

Please log in to download the printable version of this worksheet.



Spell the words after adding the suffix **-ing**.

look \_\_\_\_\_

play \_\_\_\_\_

read \_\_\_\_\_



Name: \_\_\_\_\_

## ELA Buzz

Fill in each sentence with the correct verb.

**plays****play**

Gina and Marco \_\_\_\_\_ tag.

Ella \_\_\_\_\_ on the slide.

Color the 8 words that have a long vowel sound.

|      |      |      |
|------|------|------|
| lady | met  | wait |
| bad  | tie  | go   |
| blue | snow | sock |
| kite | with | meet |

# Preview

Please log in to download the printable version of this worksheet.

Sort the words into the correct category.

**big short car desk skinny book**

*nouns*

*adjectives*

Read the sentence.  
Answer the question.

There was a mountain of pillows on my bed.

What does **mountain** mean in this sentence?

- a. a big pile
- b. a tall hill
- c. a lot of rocks

Name: \_\_\_\_\_



## ELA Buzz

Say the word. Write the two syllables in the boxes.

**playing**

|  |  |
|--|--|
|  |  |
|--|--|

Which sentence has no mistakes?

- a. Lani and I walked to the park.
- b. we went on the swings.
- c. i went down the slide.
- d. We saw our friend lila.



Complete each word to match the picture.



# Preview

Please log in to download the printable version of this worksheet.

Sort the words into the correct category.

**blue dots pink stripes green swirls**

*colors*

*patterns*

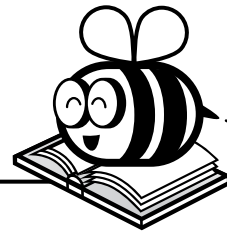
|  |
|--|
|  |
|  |
|  |

|  |
|--|
|  |
|  |
|  |

Color the 5 words that are action verbs.

|       |       |
|-------|-------|
| run   | jump  |
| feet  | eat   |
| bread | clap  |
| house | chair |
| sit   | hand  |

Name: \_\_\_\_\_



# ELA Buzz

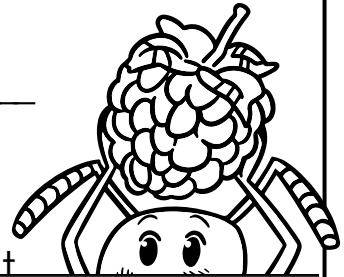
Ants live in big groups. A big ant group is called a colony. Ant colonies make nests in all kinds of things. Some nests are made in soil or sand. Some nests are made in wood or leaves.

Each ant colony has a queen ant who lays eggs. Worker ants find food and clean the nest. Soldier ants keep the colony safe.

Is this passage fiction or nonfiction? \_\_\_\_\_

What is this passage mostly about?

- a. what ants look like   b. ant colonies   c. what ants eat



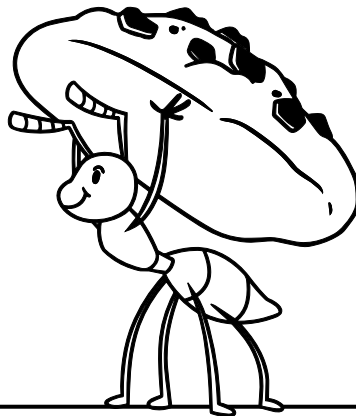
# Preview

Please log in to download the printable version of this worksheet.

What is the best meaning of **soil**?

Some nests are made in **soil** or sand.

- a. dirt
- b. rocks
- c. water



Underline the verb in the sentence.

The ant carries a leaf.

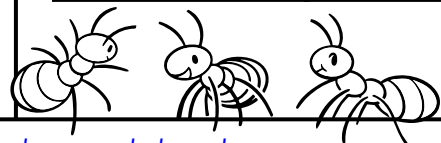
Say the word. Write the two syllables in the boxes.

**anthills**

|  |  |
|--|--|
|  |  |
|--|--|

Add commas to make the sentence correct.

Ants butterflies and bees are all insects.



Complete each word to match the picture.

slo i h



f r ee



Circle the letters that should be capitalized in the sentence.

Ma's birthday is in June.

Sort each word using the spelling pattern.

|     |      |      |
|-----|------|------|
| net | set  | seat |
| bed | neat | bead |
| CVC |      | CVVC |
| net | seat |      |
| set | neat |      |

A contraction is two words combined with an apostrophe.

Write the contraction on the line.

he will he'll

I will I'll

she will she'll

Draw a line to match the words that are opposite.

mean • big  
short • thin  
small • nice  
thick • tall

# Preview

Please log in to download the printable version of this worksheet.



Is this passage fiction or nonfiction? nonfiction

What is this passage mostly about?

- a. what ants look like
- b. ant colonies**
- c. what ants eat

Fill in the organizer with three kinds of ants.

| Kinds of Ants |        |         |
|---------------|--------|---------|
| queen         | worker | soldier |

What is the best meaning of **soil**?

Some nests are made in **soil** or sand.

**a. dirt**

- b. rocks
- c. water

Underline the verb in the sentence.

The ant carries a leaf.

Add commas to make the sentence correct.

Ants, butterflies, and bees are all insects.

Say the word. Write the two syllables in the boxes.

**anthills**

|            |              |
|------------|--------------|
| <b>ant</b> | <b>hills</b> |
|------------|--------------|