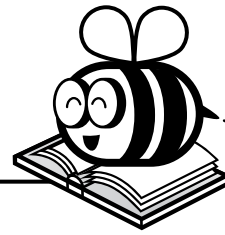


Name: _____



ELA Buzz

A **linking verb** joins the subject to a noun or adjective in the predicate of a sentence. It shows a description instead of an action.

Circle the linking verb in each sentence.

The dentist was nice.

The office is near my house.



Add punctuation to make the sentence correct.

Marco has a dentist appointment on Wednesday February 5




Preview

Please log in to download the printable version of this worksheet.

Wed. Wed

Wedn. Wedn



Underline the two words that use the same suffix.

The anticipation for the dental procedure was endless, but the procedure was painless.

Which suffix is used in both underlined words? _____

What is the best meaning of this suffix?

- a. state or quality
- b. full of
- c. without
- d. after

Name: _____

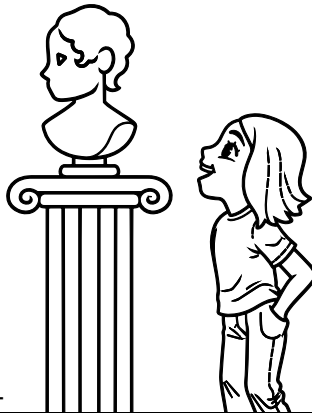


ELA Buzz

Write the past tense of the verb to complete the sentence. Put a check next to the spelling rule.

Mom _____ three
(buy)
tickets for the art museum.

- drop the e
- change y to i
- double the final consonant



Put a check next to the sentence with the correct abbreviation.

- The science museum is on Ridgeway road.
- The science museum is on Ridgeway rd.
- The science museum is on Ridgeway Rd.



Preview

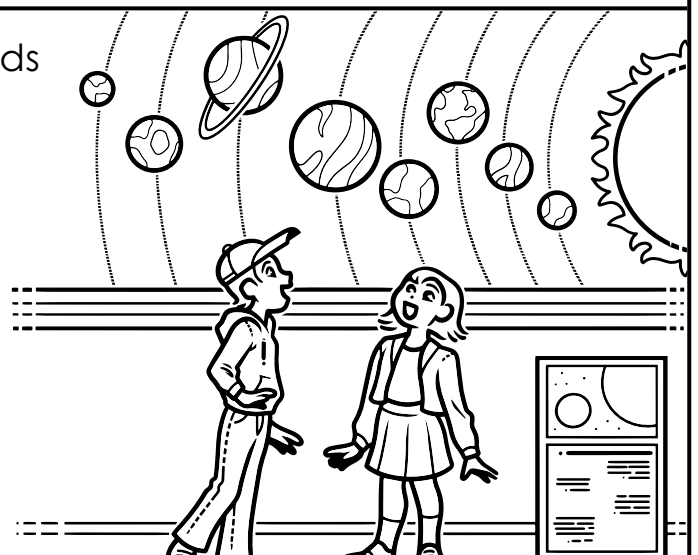
Please log in to download the printable version of this worksheet.

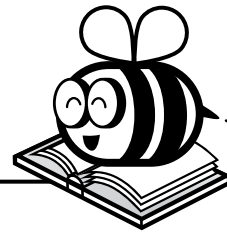
| | |
|----------|----------|
| m-us-eum | mu-se-um |
| mus-eum | mus-e-um |

Sometimes a verb cannot work alone. It needs a helper. These are called helping verbs. Write the correct helping verb to complete the sentence.

is are am

Khyier _____ going to the science museum.





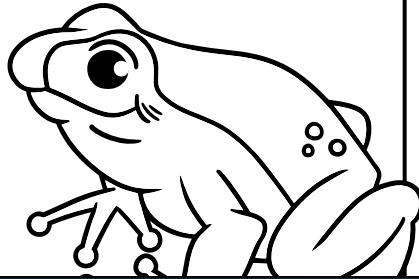
Name: _____

ELA Buzz

Complete the sentence using the correct word from the box.

large larger largest

The giant tree
frog is the



A **linking verb** joins the subject to a noun or adjective in the predicate of a sentence. It shows a description instead of an action.

Complete the sentence with the correct linking verb.

sound sounding sounds

Some frogs _____ as loud



Preview

Please log in to download the printable version of this worksheet.



A frog catches prey by flicking out its long, sticky tongue.

sm___th skin, lon___
legs, and sti___y
tong___s.

A reflexive pronoun ends in *self* or *selves*.

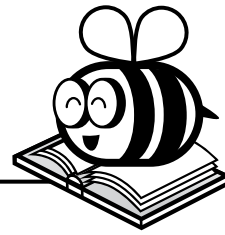
Complete the sentence using the correct reflexive pronoun.

ourselves myself themselves

Frogs protect _____ by blending in with their surroundings.



Name: _____



ELA Buzz

The words below have similar meanings.
Complete each sentence using the best word.

carrying **bearing** **transporting**

Grandma came to the party _____
a lot of gifts.

Be careful _____ the cake!

The truck _____ the tables

Write the correct form of the verb on the line.

People had _____
(pile)
the table high with birthday
presents for Lucas.

This sentence uses a

(linking verb/helping verb)



Preview
Please log in to download
the printable version of this worksheet.

Add the prefix **re-** to the base word to create a new word. Then fill in the blanks with the correct word.

| word | wrap | make | light |
|------------|------|------|-------|
| word + re- | | | |

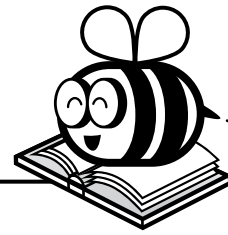
Mom needed to _____ the cake because
(make again)
the first one burned.

Dad had to _____ the candle on the cake.
(light again)

Can you _____ the present that ripped?
(wrap again)



Name: _____



ELA Buzz

The wood frog lives in woods all over the United States. Some even live in Alaska. Their bodies can do something unbelievable. They freeze!



Underline the word where the plural form requires a *y* to *i* change.

Most of the water in their bodies turns to ice.

Layers of dead leaves build up on the forest floor. When it begins to get cold, wood frogs will burrow under them. Then they stop breathing! Their hearts stop beating and blood stops flowing. Soon they completely freeze. Most of the water in their

Put a check next to the correct sentence.

The frog froze during the



Preview

Please log in to download the printable version of this worksheet.

is time to freeze again.

What is the best title for this passage?

- a. *A Frog in Alaska*
- b. *Winter Animals*
- c. *Frozen Frogs*

What is the best meaning of the word *unbelievable* in this passage?

- a. incredible
- b. hard to believe
- c. easy to believe

Is this passage fiction or nonfiction?

alone. It needs a helper. These are called helping verbs. Circle the helping verb.

Wood frogs will burrow under dead leaves.

Color the three words that have a similar meaning as *thaw*.

| | |
|---------|------|
| defrost | melt |
| freeze | cold |
| frost | warm |

Circle the linking verb in each sentence.

The dentist was nice.

The office is near my house.

My appointment was canceled.

Add punctuation to make the sentence correct.

Marco has a dentist appointment on Wednesday.

Circle the word that would best replace the underlined words. Rewrite the sentence.

Marisol was very brave during her dental appointment.

fearful courageous determined

Put a check next to the correct abbreviation for **Wednesday**.

Wed. Wed

Wedn. Wedn

Underline the two words that use the same suffix.

The anticipation for the dental procedure was endless, but the procedure was painless.

Which suffix is used in both

Preview

Please log in to download the printable version of this worksheet.



What is the best title for this passage?

c. Frozen Frogs

What is the best meaning of the word unbelievable in this passage?

a. incredible

Is this passage fiction or nonfiction?

nonfiction

Underline the word where the plural form requires a *y* to *i* change.

Most of the water in their bodies turns to ice.

Put a check next to the correct sentence.

The frog froze during the winter.

The frog froze during the winter.

The frog freeze during the winter.

Sometimes a verb cannot work alone. It needs a helper. These are called helping verbs. Circle the helping verb.

Wood frogs will burrow under dead leaves.

Color the three words that have a similar meaning as **thaw**.

| | |
|---------|------|
| defrost | melt |
| freeze | cold |
| frost | warm |