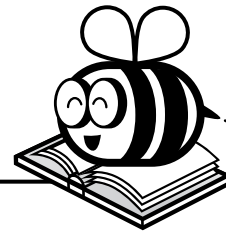


Name: \_\_\_\_\_

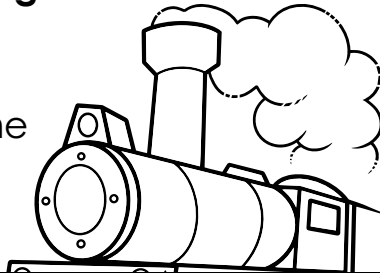


# ELA Buzz

Circle the letters that should be capitalized. Then check the box that tells why they should be capitalized.

**The pacific railway act of 1862 set aside land and funding to build the largest railroad in the U.S.**

- historical document name
- historical period name
- newspaper article title



Circle the three adverbs in the sentence. Then sort them based on what they describe.

The railroad track grew slowly but surely during the day, and the workers slept nearby each night.

manner	location



# Preview

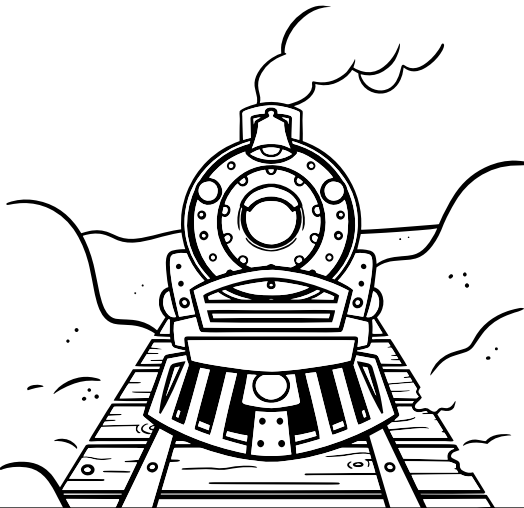
Please log in to download the printable version of this worksheet.

through some obstacles but had to build around others.

**t r a n s c o n t i n e n t a l**

**noun      adjective      adverb**

Tell what each sentence uses by writing **S** (simile) or **M** (metaphor) on the line.



- \_\_\_\_\_ The railroad was a monument to human engineering and determination.
- \_\_\_\_\_ The railroad stretched like an impossibly long snake from Iowa to the Pacific.

What do both figures of speech have in common?

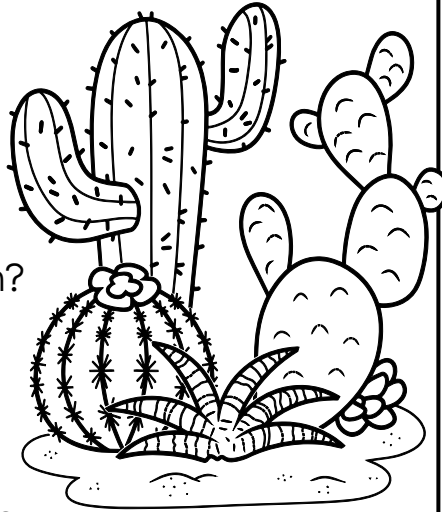
- a. They express amazement.
- b. They comment on size.
- c. They give specific details.

Name: \_\_\_\_\_



## ELA Buzz

The healthy cactus will be regrowing its spines soon enough!



Circle the homophones. Then match them with their definitions.

What tense is the sentence in?

- a. future
- b. present progressive
- c. future progressive

Izaiah's excited gait slowed as we approached the gate to the part of the greenhouse that contained poisonous plants.

Rewrite it in simple past tense.

\_\_\_\_\_ – structure to



# Preview

Please log in to download the printable version of this worksheet.

beyond simply making food for the plants that grow them.

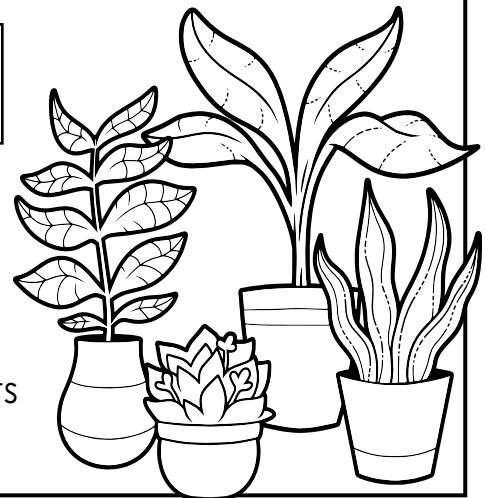
Just like the spines on a cactus, pine needles are really \_\_\_\_\_ leaves.

A word's **denotation** is its literal meaning. A word's **connotation** is a suggested meaning it carries. It usually refers to a positive or negative association.

**Example:** The room was **humid**. → neutral description of moist air  
The room was **muggy**. → negative description of moist air

Circle the words with the most positive connotation to complete the sentence.

Alexis has a(n) (obsession with / passion for / interest in) plants with highly specialized leaves such as pitcher plants and succulents.



Name: \_\_\_\_\_

## ELA Buzz

Underline both verbs in the compound predicate. Circle the one that is incorrectly conjugated.

Mom and Dad carefully explain the rules of the card game and asks if there are any questions.



Circle the best, correctly punctuated conjunction to complete the sentence.

Bobby knows buying blind bags in the hopes of getting the figure he wants is a waste of money \_\_\_\_\_ he keeps doing it anyway.

yet

for

so

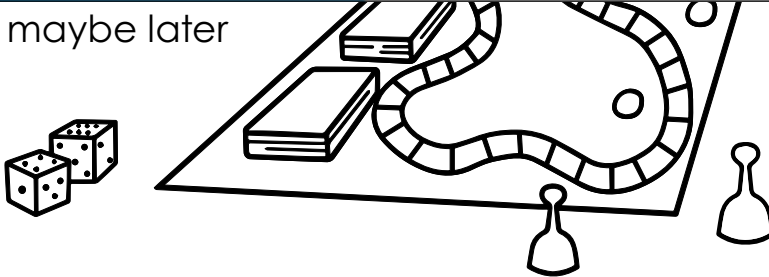
Underline the idioms.



# Preview

Please log in to download the printable version of this worksheet.

c. maybe later



knowledge of vocabulary, you can infer Fortuna was the Roman goddess of what?

a. time

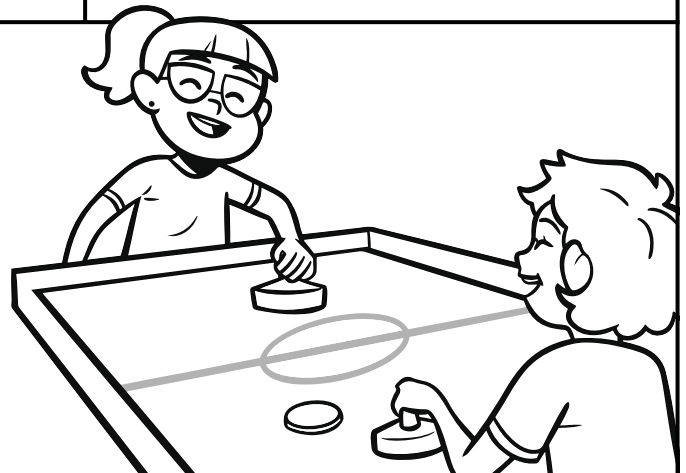
b. friendship

c. luck

d. numbers

Rewrite the sentence correctly.

Uriel have all ways proferred games of skill over games of chans. **5 errors**



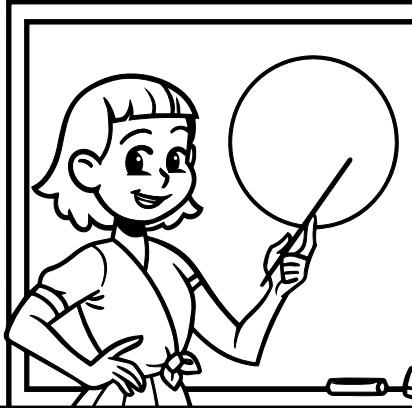


Name: \_\_\_\_\_

## ELA Buzz

Add punctuation to make the sentence correct.

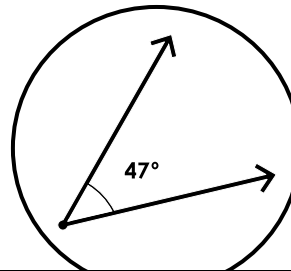
Can you tell me the total measure of degrees in a circle asked Mrs Herrera



Label each picture with the correct word from the box.

angel

angle



Complete the table with the indicated



# Preview

Please log in to download the printable version of this worksheet.

form of the adjective.

---



---



---

What does the bold word mean?

- a. more than 90 degrees
- b. slow to understand
- c. unclear; not exact

Circle the correct relative pronoun to complete each sentence.

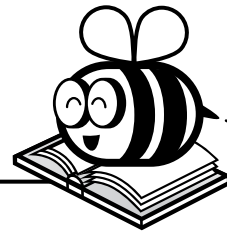
This is the geometry question (who / that) stumped half the class.

Was Yamileth the only one (who / whom) got a perfect score?

To (who / whom) did you lend your calculator?



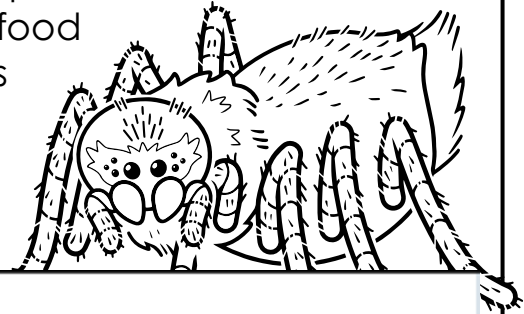
Name: \_\_\_\_\_



# ELA Buzz

Symbiotic relationships are close, lasting relationships between species. Commensalistic ones help one species and don't affect the other. Parasitic ones actively hurt the other species. Mutualistic ones help both.

The Amazon's humming frogs and burrowing tarantulas are the black sheep of their families. Humming frogs often live in the spiders' burrows. The big spiders don't just give them homes. They protect the frogs from predators. In return, scientists think the spiders might like the free food the tiny frogs attract. They also might like that the frogs pick off ants and tiny bugs that eat spider eggs. They *don't* like the way this particular frog tastes!



What inference is supported by the text?



**Preview**  
Please log in to download the printable version of this worksheet.

you think the frogs and tarantulas have.

\_\_\_\_\_

\_\_\_\_\_

Underline the titles in the sentence.

Anais wants to write a comic called Frog and Tarantula based on the Frog and Toad series.

Circle the correct spelling of the word.

**beneficiul    beneficle    beneficial**

Circle the word that is an antonym for **help**.

**aid    assistance    opposition    support**

Complete the sentence using the most accurate word.

**can    may    must**

\_\_\_\_\_ scientists ever figure out how the relationship started?



Circle the letters that should be capitalized. Then check the box that tells why they should be capitalized.

The pacific railway act of 1862 set aside land and funding to build the largest

Circle the three adverbs in the sentence. Then sort them based on what they describe.

The railroad track grew slowly but surely during the day, and the workers slept nearby each night.

Circle both prepositions. Underline both prepositional phrases.

Workers were able to build through some obstacles but had to build around others.

The prefix **trans-** means **across**.

Draw lines between the affixes and the base word. Then circle the word's part of speech.

trans/continent/al

Tell what each sentence uses by writing **S** (simile) or **M** (metaphor) on the line.

M The railroad was a monument to human engineering and determination.

S The railroad stretched like an impossible distance.

# Preview

Please log in to download the printable version of this worksheet.



What inference is supported by the text?

c. Most frogs and spiders have predator/prey relationships.

What is the main idea?

b. Humming frogs and burrowing tarantulas have a symbiotic relationship.

Tell what kind of symbiotic relationship you think they have.

Answers will vary. Accept either **mutualistic** (using the listed benefits as support) or **commensalistic** (using the word choice "might" as support).

Underline the titles in the sentence.

Anais wants to write a comic called Frog and Tarantula based on the Frog and Toad series.

Circle the word that is an antonym for **help**.

aid assistance opposition support

Circle the correct spelling of the word.

beneficial benefice

Complete the sentence using the most accurate word.

can may must

Can scientists ever figure out how the relationship started?