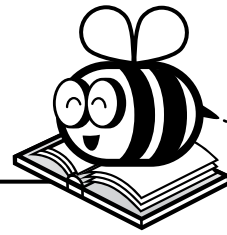
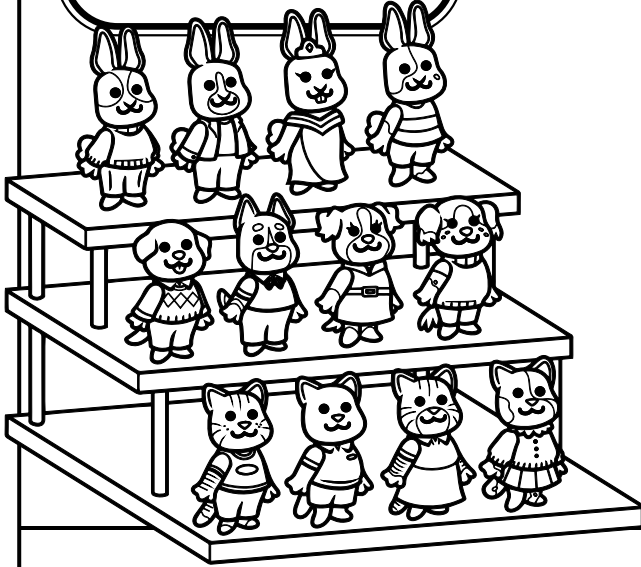


Name: \_\_\_\_\_



## ELA Buzz



Circle the homograph in each sentence. Then write the number of the definition the sentence uses on the line.

1 to place or arrange for others to see

2 a show or arrangement meant to be seen

\_\_\_\_\_ What's the best way to display these?

\_\_\_\_\_ Jaquita's figurine display took lots of effort.

Use the correct indefinite pronoun from

Circle the misspelled word, then spell it



# Preview

Please log in to download  
the printable version of this worksheet.

Hector uses lights for his display but his models won't discolor like Jaquita's will.

Write each word's part of speech on the blank line.

\_\_\_\_\_ **collect** – to bring or gather together

\_\_\_\_\_ **collector** – someone who collects things

\_\_\_\_\_ **collectible** – able to be or worth being collected

Use the correct words to complete the sentence.

Each box contains one of thirty \_\_\_\_\_ characters.

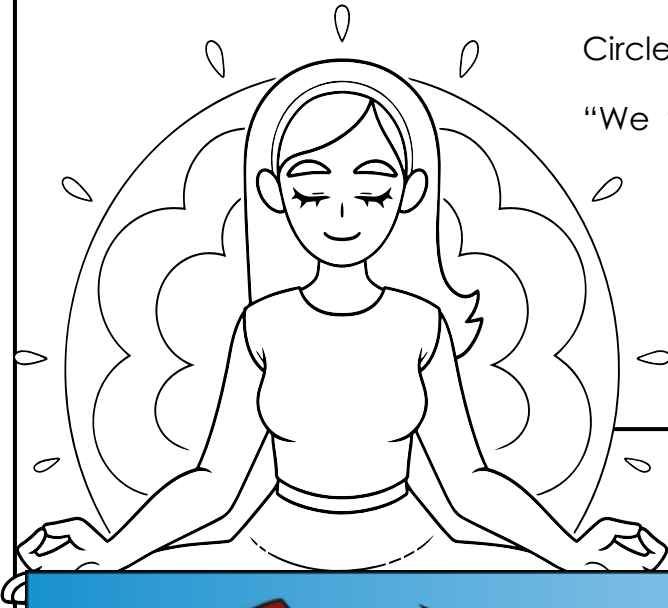
A \_\_\_\_\_ can spend thousands trying to \_\_\_\_\_ them all!



Name: \_\_\_\_\_



# ELA Buzz



Circle the interjection.

"We were supposed to bring our own yoga mats? Rats!"

What is the interjection mostly showing?

- a. annoyed frustration
- b. complete surprise
- c. sudden fear

Rewrite the sentence correctly.

I tryed meditation for mine hi stress levles. **4 errors**



# Preview

Please log in to download the printable version of this worksheet.

mean something other than their literal meanings.

Circle the proverb.

**He needs to blow off some steam.**

**A watched pot never boils.**

" \_\_\_ow \_\_\_o \_\_\_reathe \_\_\_eeply:

\_\_\_teps \_\_\_or \_\_\_taying \_\_\_alm"

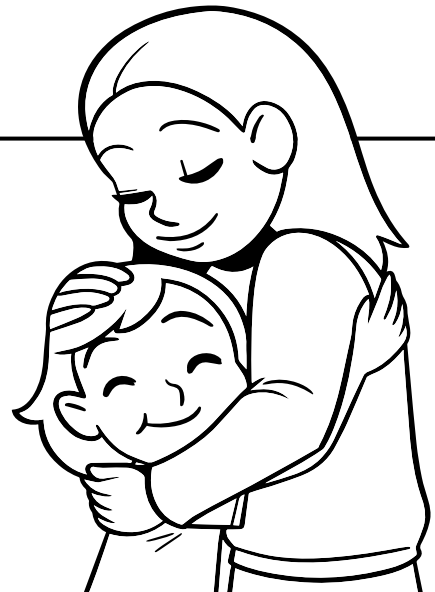
Use the correct relative pronoun to complete each sentence.

**who      which      what**

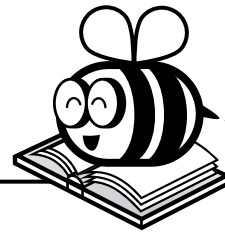
Mom is the one \_\_\_\_\_ taught me to be patient.

We're practicing \_\_\_\_\_ we learned yesterday.

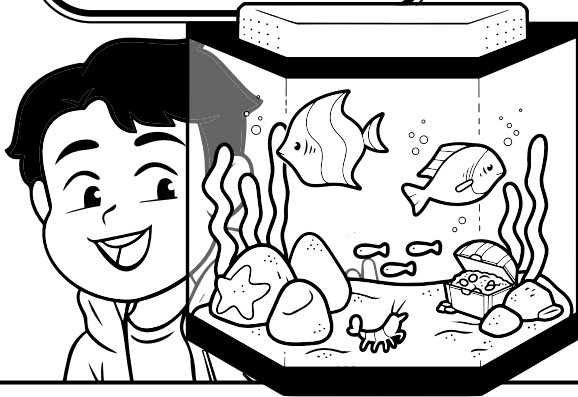
Micah rang a soft bell, \_\_\_\_\_ helped us focus.



Name: \_\_\_\_\_



# ELA Buzz



Check the box next to the sentence with no comma errors.

- "Can we start a fish tank, Dad?"
- Jesiah's tank has goldfish snails, and shrimp.
- "Dad isn't the fish tank relaxing?"

Write the correct word from the box to complete the analogy.

inhale    sigh    breathe    protect

Draw a line to match each word with its antonym.

predator ●

● disturbing



# Preview

Please log in to download the printable version of this worksheet.

have scales that fit together like puzzle pieces.

Identify each example by writing **S** (simple sentence), **C** (compound sentence), or **R** (run-on) on the line.

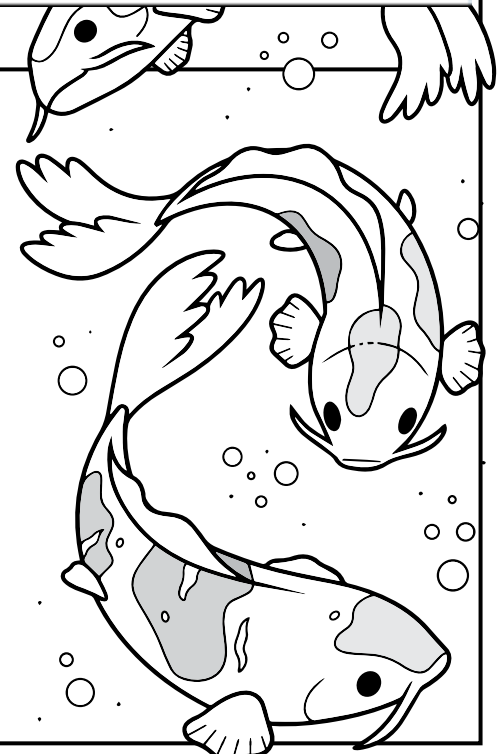
- \_\_\_ Koi aren't goldfish, but they are closely related!
- \_\_\_ We're building a small pond we don't know what to put in it.
- \_\_\_ It's better to keep bass, koi, and goldfish in larger ponds.

Fix the run-on.

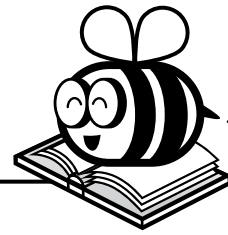
---



---



Name: \_\_\_\_\_



# ELA Buzz



Add a comma and quotation marks to make the sentence correct.

Mr. DeGraff pointed to the board and said Who can tell me what a decomposer is?

Correlative conjunctions are pairs of words or phrases that work together to show a relationship between ideas within a sentence. They are often used to clarify or emphasize ideas.

Circle the correlative conjunction phrase that pairs with the underlined phrase.



# Preview

Please log in to download the printable version of this worksheet.



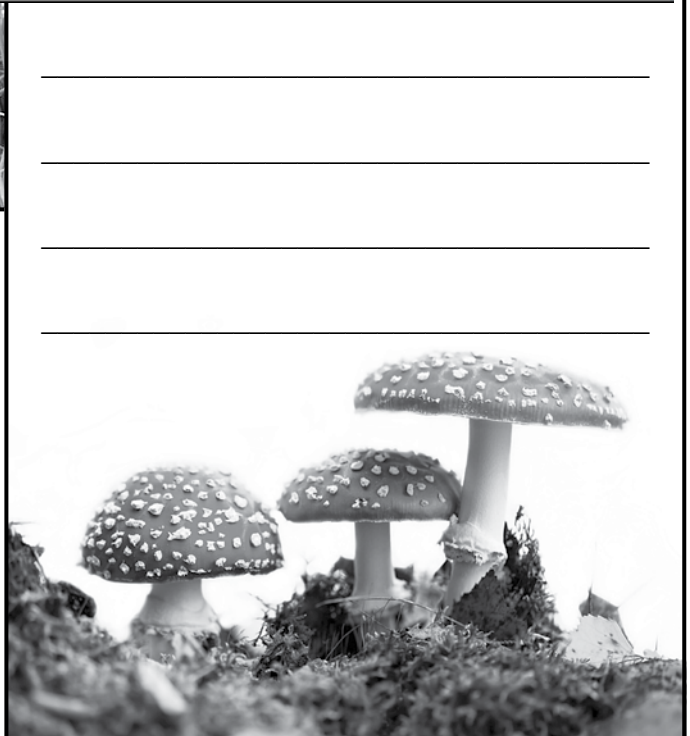
You can tell moisture speeds up **decomposition** because things like leaves break down more slowly in dry environments.

Use context to give a definition for the bold word.

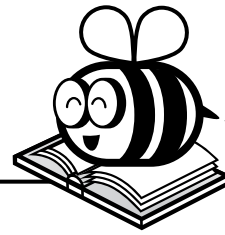
---

---

---



Name: \_\_\_\_\_



# ELA BUZZ



"I knew I shouldn't have let you borrow that necklace!" Sylva hissed.

"Then why did you?" Mystia demanded.

"It was the only way to get you to stop asking for it!"

"Well, I wouldn't have if I'd known there was a curse for losing it!"

"Too late now," said Sylva. She drummed her fingers impatiently. "You'll just have to retrace your steps throughout the kingdom until you find it."

Mystia's jaw dropped. The kingdom was made of almost fifty islands, and her trip had spanned nearly half of them. "I'll be searching for a million years!"

Sylva grinned an unfriendly grin. "Then you should probably get started."

Which sentence uses hyperbole?

- a. "It was the only way to get you to stop asking for it!"
- b. "She drummed her fingers impatiently."
- c. "I'll be searching for a million years!"



Add the suffixes to the word **retrace**.

-ed	
-ing	

Which definition matches the word **impatiently**?

- a. done without patience
- b. someone who isn't patient
- c. something without patience



What a *completely ridiculous* request!

The italics are used to...

- a. ... show a title.
- b. ... suggest a quote.
- c. ... make emphasis.

Circle the collective noun.

Mystia's traveling group checked all the nooks and crannies, but found no necklaces at all.

Circle the homograph in each sentence. Then write the number of the definition the sentence uses on the line.

- 1 What's the best way to **display** these?
- 2 Jaquita's figurine

Use the correct indefinite pronoun from the box to complete the sentence.

**anybody**    **somebody**

**Somebody** suggested she use stands to make use

Circle the misspelled word, then spell it correctly on the line.

The figures maintain value and are also **stackabel** if you leave them in their boxes.

Add a comma to make the compound sentence correct.

Hector uses lights for his display, but his models won't discolor like Jaquita's will.

**verb** \_\_\_\_\_ **collect**  
**noun** \_\_\_\_\_ **collector**  
**adjective** \_\_\_\_\_ **collectible**

Each box contains one of thirty **collectible** characters.

A **collector** can

# Preview

Please log in to download the printable version of this worksheet.



Which sentence uses hyperbole?

**c. "I'll be searching..."**

Describe the characters' relationship.

**Answers may vary but should indicate an unfriendly relationship.**

How does the setting help set up the plot?

**Answers may vary. An example is: The kingdom having lots of islands means the search will take a long time.**

Add the suffixes to the word **retrace**.

-ed    **retraced**

-ing    **retracing**

Which definition matches the word **impatiently**?

**a. done without patience**

b. someone who isn't patient

c. something without patience

What a **completely ridiculous** request!

The italics are used to...

a. ... show a title.

b. ... suggest a quote.

**c. ... make emphasis.**

Circle the collective noun.

Mystia's traveling **group**

checked all the nooks and crannies, but found no necklaces at all.