

Name: \_\_\_\_\_



# Math Buzz

Multiply.

$$\underline{\hspace{2cm}} = 2.96 \times 51$$

$$\begin{array}{r} 27.45 \\ \times \quad 48 \\ \hline \end{array}$$

Fill in the missing numbers to complete each sentence.

\_\_\_\_\_ is 10 times as much as 3.457.

\_\_\_\_\_ is  $\frac{1}{10}$  of 98.2.



Find the product of



# Preview

Please log in to download  
the printable version of this worksheet.



Write the prime factorization for 16.

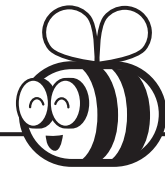
$$16 = \underline{\hspace{1cm}} \times \underline{\hspace{1cm}} \times \underline{\hspace{1cm}} \times \underline{\hspace{1cm}}$$

Find the sum.

$$45 \text{ ft } 8 \text{ in.} + 32 \text{ ft } 7 \text{ in.} =$$

$$\underline{\hspace{2cm}} \text{ ft } \underline{\hspace{2cm}} \text{ in.}$$

Name: \_\_\_\_\_



# Math Buzz

Insert parentheses to make each statement true.

$$70 \div 5 + 2 = 16$$

$$70 \div 5 + 2 = 10$$

Divide.

$$\underline{\hspace{2cm}} = 2.48 \div 8$$

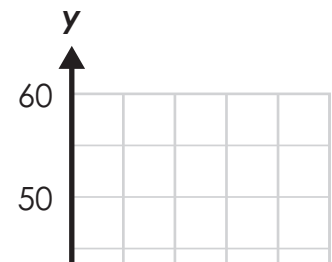
Graph the data on the coordinate grid.

Isabelle's Height					
Age (years)	1	2	3	4	5
Height (in.)	30	35	38	40	45

Write the ordered pairs for each point.

\_\_\_\_\_

\_\_\_\_\_



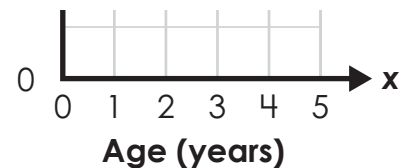
# Preview

Please log in to download the printable version of this worksheet.

\_\_\_\_\_

\_\_\_\_\_

\_\_\_\_\_



Multiply.

$$821.6 \times 10^1 = \underline{\hspace{2cm}}$$

$$345.78 \times 10^1 = \underline{\hspace{2cm}}$$

$$821.6 \times 10^2 = \underline{\hspace{2cm}}$$

$$345.78 \times 10^2 = \underline{\hspace{2cm}}$$

$$821.6 \times 10^3 = \underline{\hspace{2cm}}$$

$$345.78 \times 10^3 = \underline{\hspace{2cm}}$$

Name: \_\_\_\_\_



# Math Buzz

Compare using the words "is greater than", "is less than", or "is equal to".

$$178 \times \frac{5}{9} \quad \underline{\hspace{2cm}} \quad 178$$

$$178 \times \frac{3}{7} \quad \underline{\hspace{2cm}} \quad 178$$

$$178 \times \frac{8}{3} \quad \underline{\hspace{2cm}} \quad 178$$

Classify the quadrilateral by its angles.

$50^\circ, 50^\circ, 130^\circ, 130^\circ$

square

rectangle

trapezoid

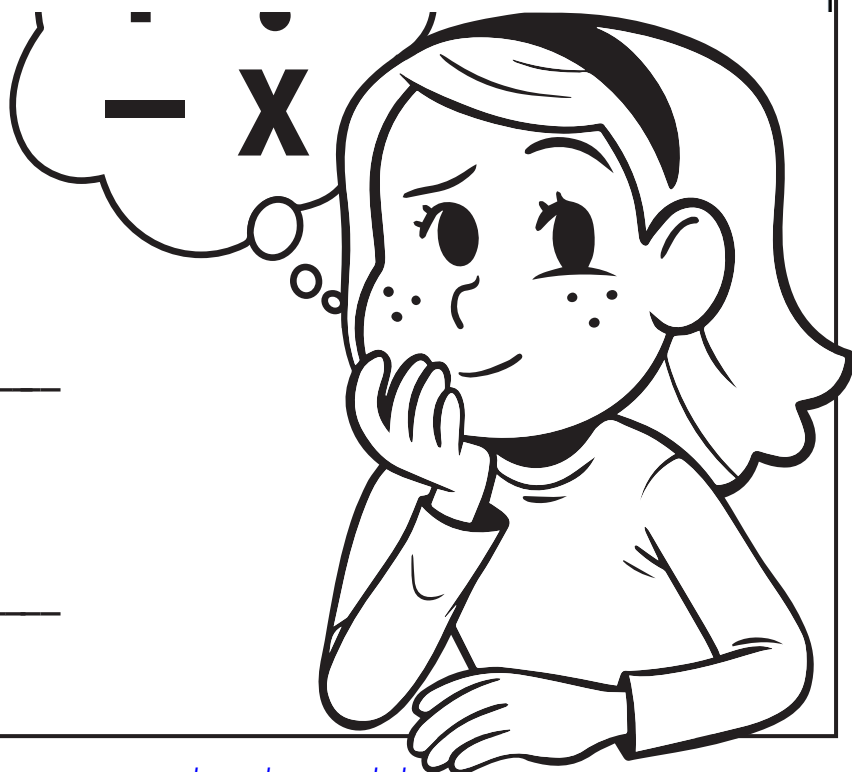
Find the difference.



2. Exponents
3. Multiplication or Division
4. Addition or Subtraction

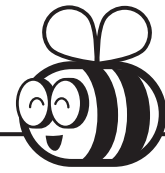
# Preview

Please log in to download the printable version of this worksheet.



$$8 \times 18 \div 4 + 15 = \underline{\hspace{2cm}}$$

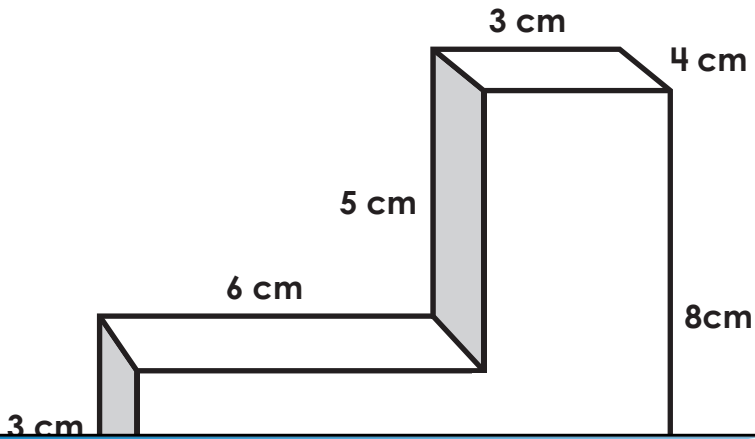
$$4^2 \times (8 - 3) = \underline{\hspace{2cm}}$$



Name: \_\_\_\_\_

## Math Buzz

Partition the shape into Prism A and Prism B. Then find the volume of the combined rectangular prisms.



Evaluate each expression for  $x = 32$  and  $y = 16$ .

$$(4x + 3y) \div 8 = \underline{\hspace{2cm}}$$

$$144 \div (5y - 2x) = \underline{\hspace{2cm}}$$



# Preview

Please log in to download the printable version of this worksheet.

Prism B: \_\_\_\_\_ x \_\_\_\_\_ x \_\_\_\_\_ = \_\_\_\_\_

Volume = \_\_\_\_\_ cubic cm

Divide.

$$951.4 \div 10^1 = \underline{\hspace{2cm}}$$

$$346.82 \div 10^1 = \underline{\hspace{2cm}}$$

$$951.4 \div 10^2 = \underline{\hspace{2cm}}$$

$$346.82 \div 10^2 = \underline{\hspace{2cm}}$$

$$951.4 \div 10^3 = \underline{\hspace{2cm}}$$

$$346.82 \div 10^3 = \underline{\hspace{2cm}}$$

Name: \_\_\_\_\_



# Math Buzz

Divide.

$$0.9 \overline{)32.4}$$

Rewrite the exponent using repeated multiplication and solve.

$$5^3$$

Rewrite the expression using exponents and solve.

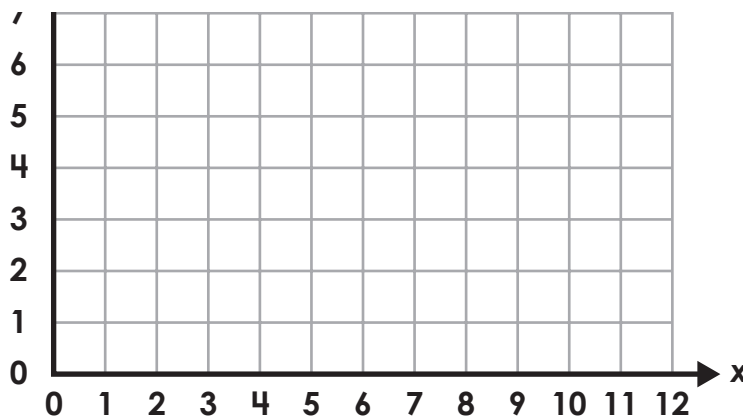
$$6 \times 6 \times 6 \times 6$$

Complete the table and graph the equation.



# Preview

Please log in to download  
the printable version of this worksheet.



Find the sum.

$$76 \text{ lbs } 14 \text{ oz.} + 48 \text{ lbs } 6 \text{ oz.} = \underline{\hspace{2cm}} \text{ lbs } \underline{\hspace{2cm}} \text{ oz.}$$



Multiply.

$$\begin{array}{r} 150.96 \\ 27.45 \\ \times 48 \\ \hline 1,317.60 \end{array}$$

Find the product of 93 and 2.59.

$$5,003.4$$

Fill in the missing numbers to complete each sentence.

$$\underline{34.57} \text{ is 10 times as much as } 3.457.$$

$$\underline{9.82} \text{ is } \frac{1}{10} \text{ of } 98.2.$$

Write the prime factorization for 16.

$$16 = \underline{2} \times \underline{2} \times \underline{2} \times \underline{2}$$

Find the sum.

$$45 \text{ ft } 8 \text{ in.} + 32 \text{ ft } 7 \text{ in.} =$$

$$\underline{78} \text{ ft } \underline{3} \text{ in}$$

Insert parentheses to make each statement true.

$$(70 \div 5) + 2 = 16$$

$$70 \div (5 + 2) = 10$$

Divide.

$$\underline{0.31} = 2.48 \div 8$$

Find the quotient of 124.5 divided by 5.

$$\underline{24.9}$$

$$\underline{17.3}$$

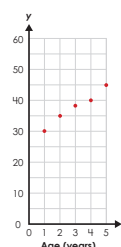
Write the ordered pairs for each point.

$$\underline{(1,30)}, \underline{(2,35)}, \underline{(3,38)},$$

$$\underline{(4,40)}, \underline{(5,45)}$$

What does the ordered pair (4, 40) tell you about the Isabelle's age and height.

**It tells me that at the age of 4 Isabelle was**



Multiply.

$$821.6 \times 10^1 = \underline{8,216}$$

$$821.6 \times 10^2 = \underline{82,160}$$

$$821.6 \times 10^3 = \underline{821,600}$$

$$345.78 \times 10^1 = \underline{3,457.8}$$

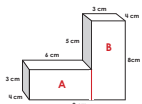
$$345.78 \times 10^2 = \underline{34,578}$$



# Preview

Please log in to download the printable version of this worksheet.

Partition the shape into Prism A and Prism B. Then find the volume of the combined rectangular prisms.



$$\text{Prism A: } \underline{6} \times \underline{3} \times \underline{4} = \underline{72}$$

$$\text{Prism B: } \underline{8} \times \underline{4} \times \underline{3} = \underline{96}$$

$$\text{Volume} = \underline{168} \text{ cubic cm}$$

Answers may vary.

Evaluate each expression for  $x = 32$  and  $y = 16$ .

$$(4x + 3y) \div 8 = \underline{22}$$

$$(128 + 48) \div 8$$

$$176 \div 8 = 22$$

$$144 \div (5y - 2x) = \underline{9}$$

$$144 \div (80 - 64)$$

$$144 \div 16 = 9$$

Multiply.

$$\begin{array}{r} 32 \\ 21 \\ 64.3 \\ \times 8.5 \\ \hline 3215 \\ + 51440 \\ \hline 546.55 \end{array}$$

Divide.

$$951.4 \div 10^1 = \underline{95.14}$$

$$951.4 \div 10^2 = \underline{9.514}$$

$$951.4 \div 10^3 = \underline{.9514}$$

$$346.82 \div 10^1 = \underline{34.682}$$

$$346.82 \div 10^2 = \underline{3.4682}$$

$$346.82 \div 10^3 = \underline{.34682}$$

Divide.

$$\begin{array}{r} 36 \\ 0.9 \overline{)32.4} \\ \underline{-27} \phantom{0} \\ 54 \\ \underline{-54} \\ 0 \end{array}$$

Rewrite the exponent using repeated multiplication and solve.

$$5^3$$

$$\underline{5 \times 5 \times 5 = 125}$$

Rewrite the expression using exponents and solve.

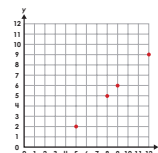
$$6 \times 6 \times 6 \times 6$$

$$\underline{6^4 = 1,296}$$

Complete the table and graph the equation.

$$y = x - 3$$

x	12	9	5	8
y	9	6	2	5



Find the sum.

$$76 \text{ lbs } 14 \text{ oz.} + 48 \text{ lbs } 6 \text{ oz.} =$$

$$\underline{125} \text{ lbs } \underline{4} \text{ oz.}$$