

Name: _____



Math Buzz



Find the GCF of 45 and 54.

Factors of 45: _____

Factors of 54: _____

The GCF is _____.

Write the decimal in standard form.

$$(8 \times 1) + (7 \times \frac{1}{10}) + (2 \times \frac{1}{1,000})$$



Preview

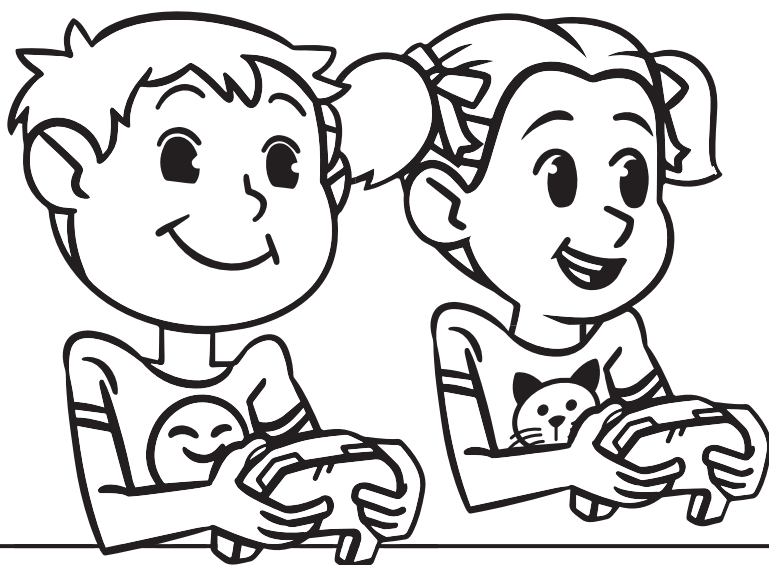
Please log in to download
the printable version of this worksheet.

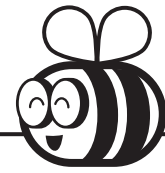
answer: _____

$$9,560 = \text{_____} \div 10^3$$

$$\text{_____} \div 10^5 = 82$$

$$4,000,000,000 \div 10\text{---} = 4$$





Name: _____

Math Buzz

Find the rule.

Input	72	54	120	360	84
Output	12	9	20	60	14

Rule: _____

Use the rule to find the output if the input is 150.

Add.

$$7.91 + 53.08 = \underline{\hspace{2cm}}$$

$$\begin{array}{r} 89.51 \\ + 63.68 \\ \hline \end{array}$$

Multiply. Simplify if possible.

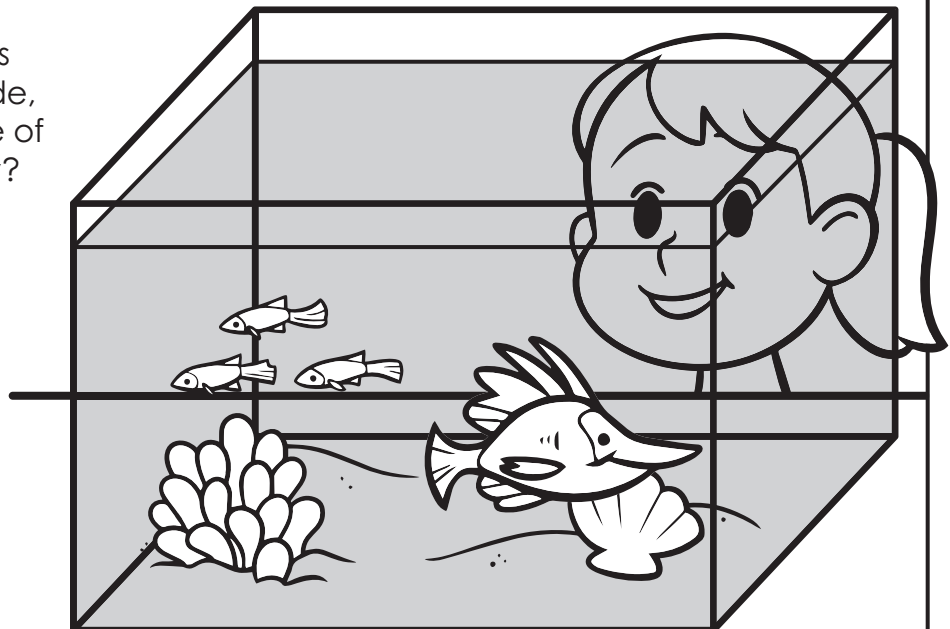


Preview

Please log in to download
the printable version of this worksheet.

Penelope is buying a new aquarium for her tropical fish. The one she wants to buy is 24 inches long, 12 inches wide, and 16 inches tall. What is the volume of the aquarium Penelope wants to buy?

Show your work.



answer: _____

Name: _____



Math Buzz

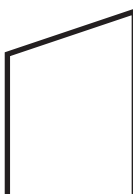
Mikel's family and Jorge's family are both driving to Adventure Land Amusement Park this summer. Mikel lives 86.23 miles from the park, and Jorge lives 59.62 miles from the park. How much closer does Jorge live to Adventure Land than Mikel?

Show your work.

Write the decimal in expanded form.

4.965

Color the rhombuses.



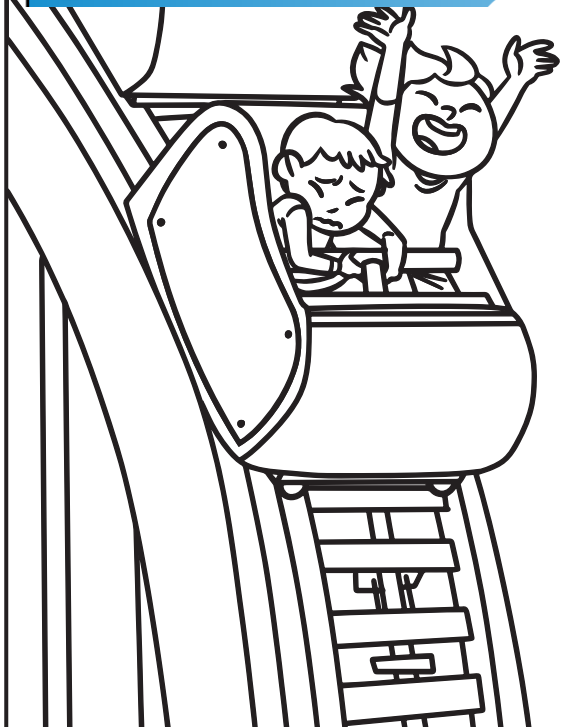
Preview

Please log in to download the printable version of this worksheet.

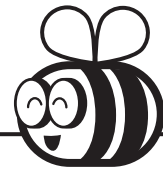
Describe the attributes of a rhombus.

Evaluate each expression. Then compare using $>$, $<$, or $=$.

$$7 \times \left(\frac{3}{8} + \frac{1}{4}\right) \quad \bigcirc \quad \left(\frac{8}{9} \times 6\right) - \frac{2}{3}$$



Name: _____

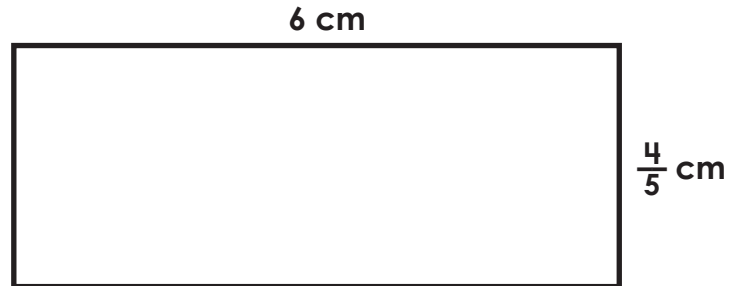


Math Buzz

Find the rule and complete the table.

Input	Output
9	72
11	
26	
19	152
30	240

Find the area of the rectangle. Simplify if possible.



Area = _____ square cm



Preview

Please log in to download
the printable version of this worksheet.

answer: _____



$$\begin{array}{r} 56.19 \\ - 8.81 \\ \hline \end{array}$$

Subtract 19.36 from 44.08.

Name: _____



Math Buzz

Write the fraction as a division expression.

$$\frac{7}{8} = \underline{\hspace{2cm}}$$

Write the division expression as a fraction.

$$9 \div 12 = \underline{\hspace{2cm}}$$

Plot and label the points on the coordinate grid.



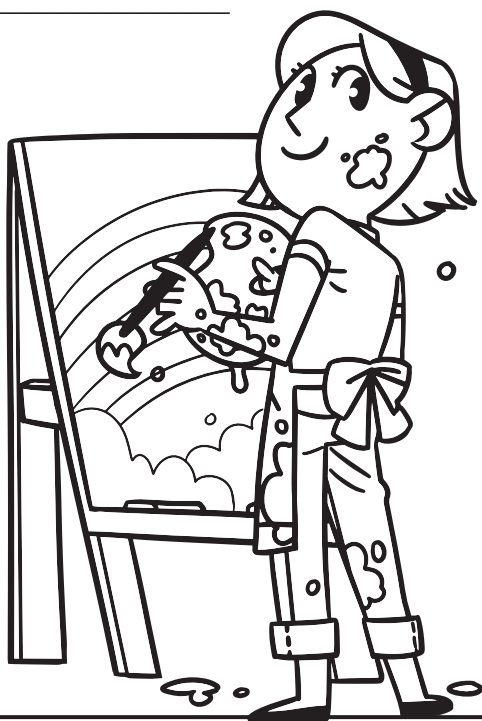
At Webster Elementary School, $\frac{4}{6}$ of the fifth graders are enrolled in summer camps. Of the students enrolled in summer camps, $\frac{8}{10}$ are enrolled in an



answer: _____

Preview

Please log in to download the printable version of this worksheet.



Evaluate each expression.

$$(16 \times 18) \div (42 - 36) = \underline{\hspace{2cm}}$$

$$\underline{\hspace{2cm}} = (300 \div 12) + (15 \times 9)$$



Find the GCF of 45 and 54.

Factors of 45:

1, 3, 5, 9, 15, 45

Factors of 54:

1, 2, 3, 6, 9, 18, 27, 54

The GCF is **9**.

Write the decimal in standard form.

$$(8 \times 1) + (7 \times \frac{1}{10}) + (2 \times \frac{1}{1,000})$$

answer: **8.702**

Aubrey and Miles are working to save money to buy a new gaming system for their playroom. So far Aubrey has saved \$68.42 and Miles has saved \$56.79. If they combine the money they each saved, how much do they have?

Show your work.

$$68.42 + 56.79 = 125.21$$

answer: **\$125.21**

Fill in the missing numbers.

$$6 = 60,000,000 \div 10^7$$

$$9,560 = 9,560,000 \div 10^3$$

$$8,200,000 \div 10^5 = 82$$

$$4,000,000,000 \div 10^9 = 4$$

Find the rule.

Input	72	54	120	360	84
Output	12	9	20	60	14

Rule: **Divide by 6**

Use the rule to find the output if the input is 150.

Add.

$$7.91 + 53.08 = 60.99$$

$$\begin{array}{r} 89.51 \\ + 63.68 \\ \hline 153.19 \end{array}$$

Multiply. Simplify if possible.

$$\frac{5}{6} \times \frac{15}{10} = \frac{75}{60} = 1\frac{15}{60} = 1\frac{1}{4}$$

$$\frac{5}{7} \times \frac{11}{12} = \frac{55}{84}$$

Penelope is buying a new aquarium for her tropical fish. The one she wants to buy is 24 inches long, 12 inches wide, and 16 inches tall. What is the volume of the aquarium Penelope wants to buy?

Show your work.

$$24 \times 12 \times 16 = 4,608$$



answer: **20.61 miles**

Preview

Please log in to download the printable version of this worksheet.

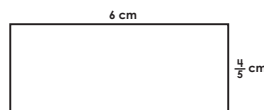
Answers may vary.

Find the rule and complete the table.

Input	Output
9	72
11	88
26	208
19	152
30	240

Rule: **Multiply by 8**

Find the area of the rectangle. Simplify if possible.



$$6 \times \frac{4}{5} = \frac{24}{5} = 4\frac{4}{5}$$

Area = **4 4/5** square cm

Subtract.

$$35.68 - 33.92 = 1.76$$

$$\begin{array}{r} 45.11 \\ - 8.81 \\ \hline 47.38 \end{array}$$

Subtract 19.36 from 44.08.

$$44.08 - 19.36 = 24.72$$

A local children's author donated 1,055 books to Homestead Elementary School. The school librarian will distribute an equal number of books to each of the 33 classes, and keep any that are left over in the library. How many books will each class get?

Show your work.

$$1,055 \div 33 = 31 \text{ r } 32$$

answer: **31 books**

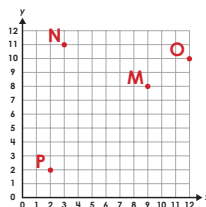
Write the fraction as a division expression.

$$\frac{7}{8} = 7 \div 8$$

Write the division expression as a fraction.

$$9 \div 12 = \frac{9}{12}$$

Plot and label the points on the coordinate grid.



M (9, 8) N (3, 11) O (12, 10) P (2, 2)

At Webster Elementary School, $\frac{4}{6}$ of the fifth graders are enrolled in summer camps. Of the students enrolled in summer camps, $\frac{8}{12}$ are enrolled in an art camp. What fraction of the fifth graders at Webster are enrolled in art camp?

$$\frac{4}{6} \times \frac{8}{12} = \frac{32}{72} = \frac{4}{9}$$

answer: **$\frac{4}{9}$ of the fifth graders**

Evaluate each expression.

$$(16 \times 18) \div (42 - 36) = 48$$

$$160 = (300 \div 12) + (15 \times 9)$$