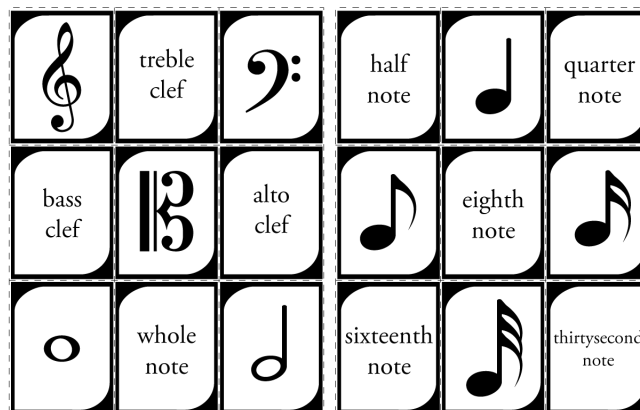


Music Symbols Match Game



This game is played like the memory match card game that many children are familiar with. It is designed to reinforce their understanding of basic music notation.

Materials:

Music symbol cards and music symbol name cards (pages 2-5)

Set Up:

Copy the symbols on each sheet of paper, cut them out, and mix them up.

Cut the

Laminat



How to Play:

Lay all of the cards upside-down on the table and mix them up.

Players will flip pairs of cards. They will try to match the music symbol card to the card with the same music symbol's name.

example: The "treble clef" card matches the card with illustrated treble clef.

Player 1 flips two cards. If the cards match, he or she gets to keep both cards. If the cards do not match, then the cards are flipped back upside-down.

Then, player 2 gets a turn to try to flip matching cards. Players alternate until all cards have been removed from the game.

When the game is over, the player with the most cards is the winner.

Note to Teachers:

Remove any pairs of cards that you feel are too advanced for your current curriculum.



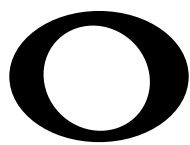
treble
clef



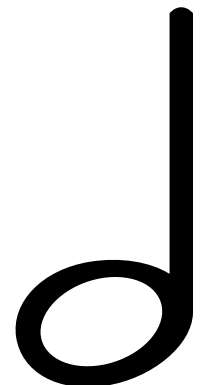
ba
cl

 **~ PREVIEW ~**
Please log in or register to download
the printable version of this worksheet.

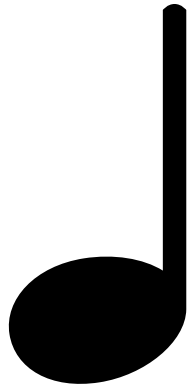
co
ef



whole
note



half
note



quarter
note



~ **PREVIEW** ~

Please log in or register to download
the printable version of this worksheet.

sixteenth
note



thirty-second
note



whole
rest



h
re

 **~ PREVIEW ~**
Please log in or register to download
the printable version of this worksheet.

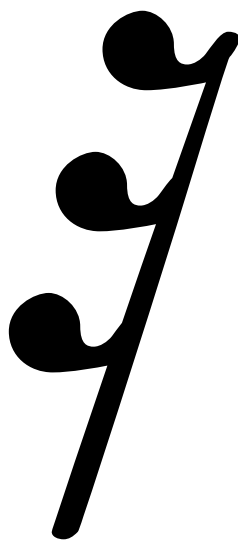
ter
st



eighth
rest



sixteenth
rest



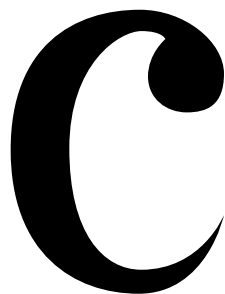
thirty-second
rest



~ PREVIEW ~

Please log in or register to download
the printable version of this worksheet.

flat



common
time