

# Phonics Short-E and Long-E Scavenger Hunt Activity

## Materials:

Scavenger hunt worksheet (page 2)  
15 Phonics short-e and long-e word cards (pages 3-6)  
Scissors and scotch tape

## Preparation

Print the word cards on card stock or brightly-colored paper and cut them apart along the dotted lines.

Make copies of the scavenger hunt worksheet.  
Each student will need his or her own copy.

Hide the 15 word cards around your classroom where students will be able to find them. You can put them on chairs, on the pencil sharpener, on the back of your classroom door, on the sides of student desks, on the white board, or wherever you like.

## Activity

Students receive a copy of the scavenger hunt worksheet. They have to search the room and find all of the phonics word cards.

When they find a card, they:

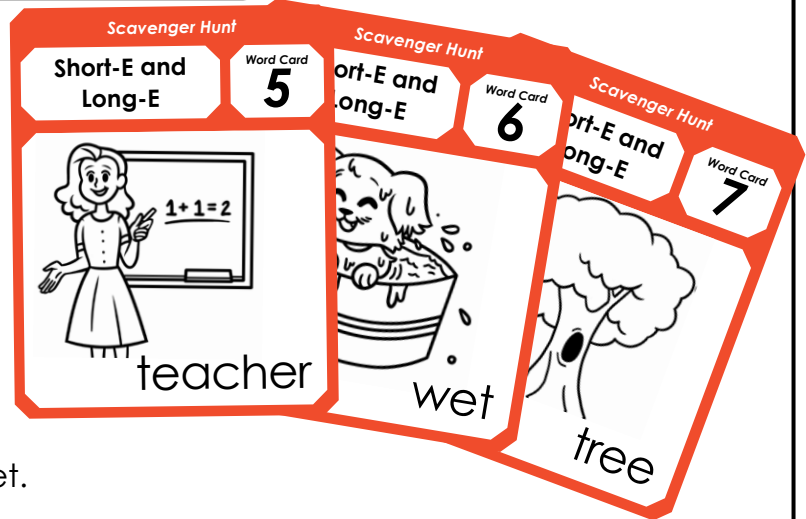
1. Say the word aloud.
2. Spell the word aloud.
3. Neatly write the word on their worksheet.
4. Write  $\text{ĕ}$  or  $\text{ē}$  to tell which vowel sound is in the word.

## Management tips

1. You can have the kids work by themselves or with partners.
2. Don't be afraid to hide the facts in tough places. Kids think it's more fun when they have to search around a little.

### Examples of good hiding spots might include:

- sticking out of a book, like a bookmark
  - the back of the classroom door
  - laying flat on the bookshelf
  - on the back of the teacher's chair
  - on the side of your computer monitor
3. Have a plan for students who finish early. You may want to have an assignment for them to complete when they're done, or you may have them help other students find Word Cards.



Name: \_\_\_\_\_

# Phonics Short-E and Long-E Scavenger Hunt Activity



Find the Short-E and Long-E words in your classroom.  
Write the words on this page. Tell whether each word  
has the ě (short-e) or ē (long-e) sound

**Card 1:** \_\_\_\_\_  
word ě or ē

**Card 2:** \_\_\_\_\_  
word ě or ē

**Card 3:** \_\_\_\_\_  
word ě or ē

**Card 4:** \_\_\_\_\_  
word ě or ē

**Card 5:** \_\_\_\_\_  
word ě or ē

**Card 6:** \_\_\_\_\_  
word ě or ē

**Card 7:** \_\_\_\_\_  
word ě or ē

**Card 8:** \_\_\_\_\_  
word ě or ē

**Card 9:** \_\_\_\_\_  
word ě or ē

**Card 10:** \_\_\_\_\_  
word ě or ē

**Card 11:** \_\_\_\_\_  
word ě or ē

**Card 12:** \_\_\_\_\_  
word ě or ē

**Card 13:** \_\_\_\_\_  
word ě or ē

**Card 14:** \_\_\_\_\_  
word ě or ē

**Card 15:** \_\_\_\_\_  
word ě or ē

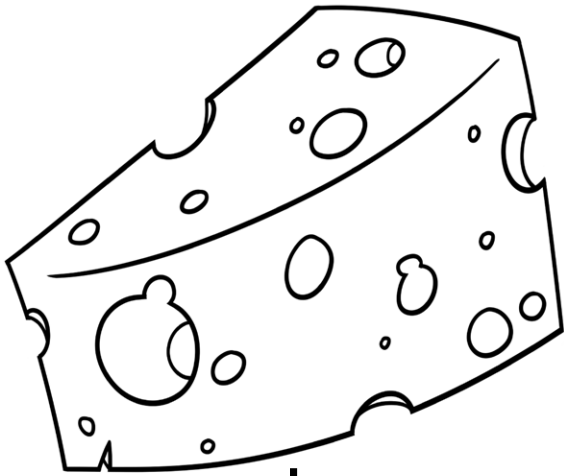


Scavenger Hunt

Short-E and  
Long-E

Word Card

1



cheese

Scavenger Hunt

Short-E and  
Long-E

Word Card

2



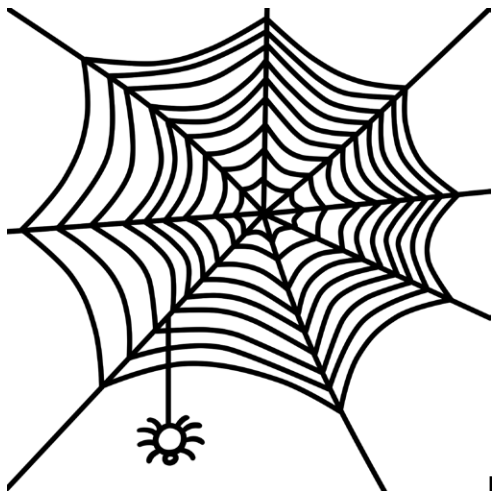
tent

Scavenger Hunt

Short-E and  
Long-E

Word Card

3



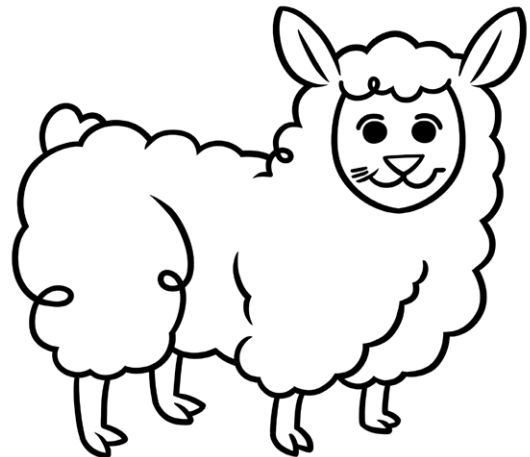
web

Scavenger Hunt

Short-E and  
Long-E

Word Card

4



sheep

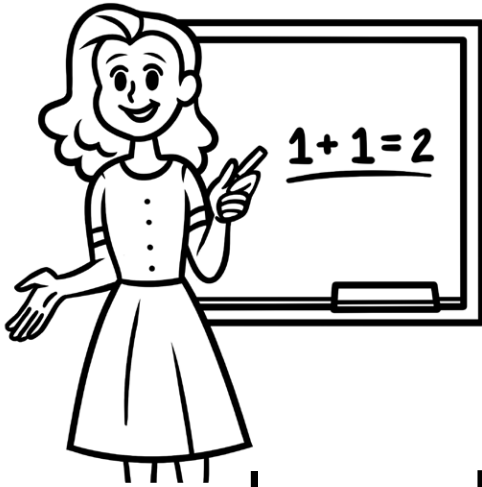


Scavenger Hunt

Short-E and  
Long-E

Word Card

5



teacher

Scavenger Hunt

Short-E and  
Long-E

Word Card

6



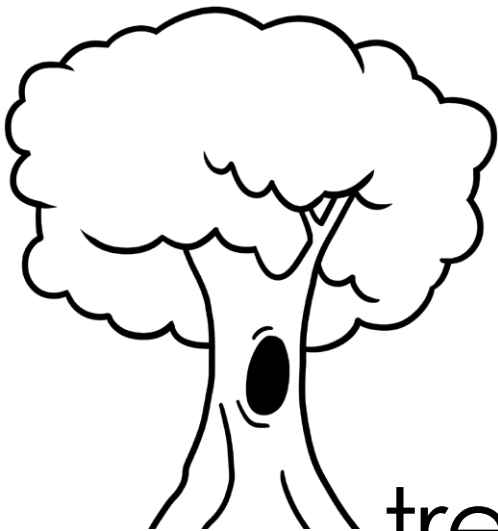
wet

Scavenger Hunt

Short-E and  
Long-E

Word Card

7



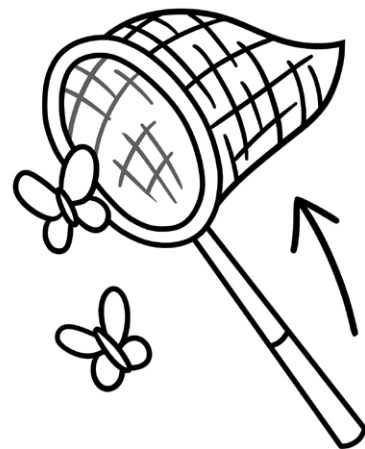
tree

Scavenger Hunt

Short-E and  
Long-E

Word Card

8



net



Scavenger Hunt

Short-E and  
Long-E

Word Card

9



men

Scavenger Hunt

Short-E and  
Long-E

Word Card

10



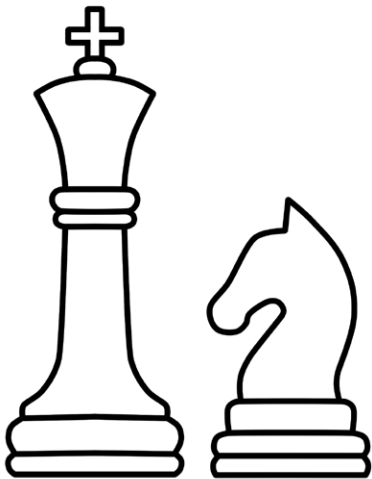
sleep

Scavenger Hunt

Short-E and  
Long-E

Word Card

11



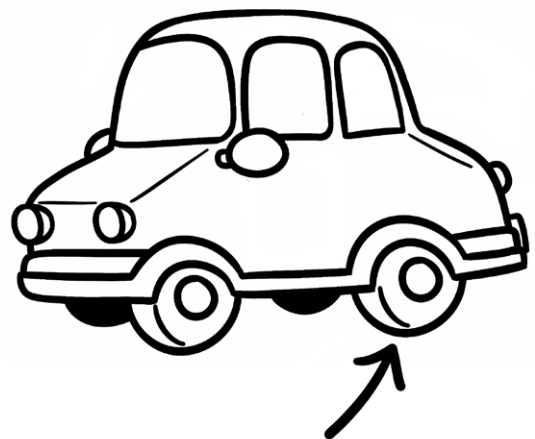
chess

Scavenger Hunt

Short-E and  
Long-E

Word Card

12



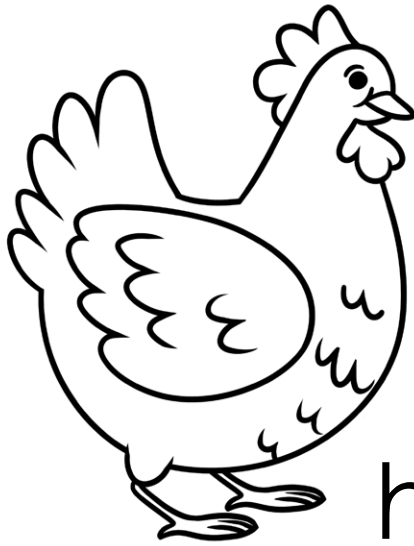
wheel



Scavenger Hunt

Short-E and  
Long-E

Word Card  
**13**



hen

Scavenger Hunt

Short-E and  
Long-E

Word Card  
**14**

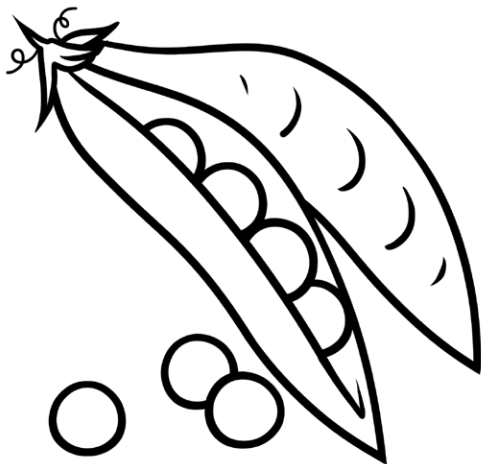


nest

Scavenger Hunt

Short-E and  
Long-E

Word Card  
**15**



peas

# ANSWER KEY



## Phonics Short-E and Long-E Scavenger Hunt Activity

Find the Short-E and Long-E words in your classroom.  
Write the words on this page. Tell whether each word has the ě (short-e) or ē (long-e) sound

Card 1: cheese      ē  
word                      ě or ē

Card 2: tent                      ě  
word                      ě or ē

Card 3: web                      ě  
word                      ě or ē

Card 4: sheep                      ē  
word                      ě or ē

Card 5: teacher                      ē  
word                      ě or ē

Card 6: wet                      ě  
word                      ě or ē

Card 7: tree                      ē  
word                      ě or ē

Card 8: net                      ě  
word                      ě or ē

Card 9: men                      ě  
word                      ě or ē

Card 10: sleep                      ē  
word                      ě or ē

Card 11: chess                      ě  
word                      ě or ē

Card 12: wheel                      ē  
word                      ě or ē

Card 13: hen                      ě  
word                      ě or ē

Card 14: nest                      ě  
word                      ě or ē

Card 15: peas                      ē  
word                      ě or ē