

Name: \_\_\_\_\_

# Where Do You Live?

By Lill Pluta

## Urban City

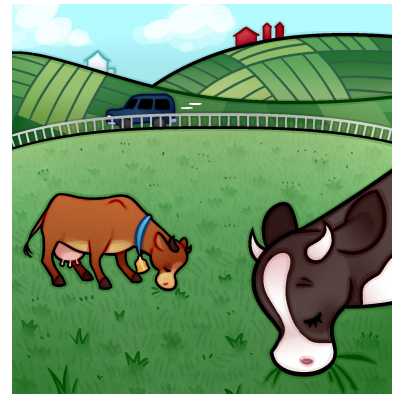
Glass and steel apartment buildings.  
Taxis honking, traffic yielding.  
Ride the subway. Catch a train.  
Construction workers steer a crane.  
Streets are noisy, bustling, gritty,  
Here inside my awesome city.



**Preview**  
Please log in to download  
the printable version of this worksheet.

## Rural Countryside

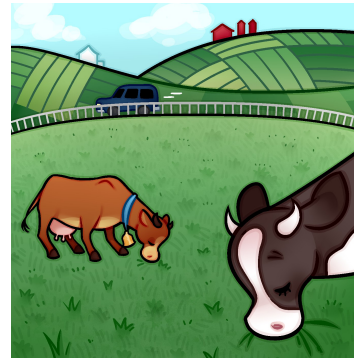
Houses spread out far apart with miles and miles between.  
Grazing cows and wide blue skies create a peaceful scene.  
Tractors, silos, big red barns, a hay field freshly mowed.  
Lumber trucks go rumbling past the fruit stands by the road.  
To shop, we have to drive to town, but I don't really mind.  
At night, I watch the twinkling stars and let my brain unwind.



Name: \_\_\_\_\_

# Where Do You Live?

By Lill Pluta



1. Cassandra's neighbors are farmers. Where does Cassandra most likely live?

\_\_\_\_\_

2. Mr. Santiago takes a taxi to and from work every day. Where does he most likely live?

\_\_\_\_\_



# Preview

Please log in to download the printable version of this worksheet.

\_\_\_\_\_

\_\_\_\_\_

5. Describe the scenery you might observe in the countryside.

\_\_\_\_\_

\_\_\_\_\_

Name: \_\_\_\_\_

# Where Do You Live?

By Lill Pluta



Fill in the missing letters to create a word from the poem.  
Then write the full word on the line.  
Be sure each word is spelled correctly.

1. \_\_\_\_ i t t \_\_\_\_

**clue:** dusty, sandy, gravelly

1. \_\_\_\_\_



## Preview

Please log in to download  
the printable version of this worksheet.

4. \_\_\_\_ u \_\_\_\_ r b s

**clue:** residential area outside of  
a city

4. \_\_\_\_\_

5. \_\_\_\_ i \_\_\_\_ o

**clue:** towers on a farm used to  
store grain

5. \_\_\_\_\_

Name: \_\_\_\_\_

# Where Do You Live?

By Lill Pluta

In the poem, "Where Do You Live?" you learned about what it's like to live in a city, a suburban neighborhood, and a rural countryside.

On the lines below, tell whether you live in a city, the suburbs, or the countryside. Describe what it's like where you live. Be sure to use complete sentences.



---

---



**Preview**  
Please log in to download  
the printable version of this worksheet.

---

---

---

---

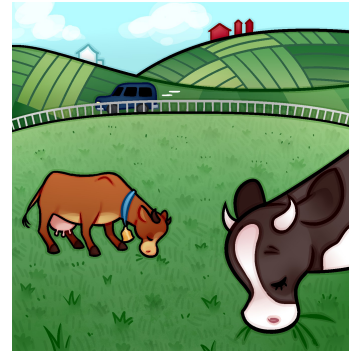
## ANSWER KEY

# Where Do You Live?

By Lill Pluta

1. Cassandra's neighbors are farmers. Where does Cassandra most likely live?

Cassandra lives in the (rural) countryside.



# Preview

Please log in to download  
the printable version of this worksheet.



## ANSWER KEY

# Where Do You Live?

By Lill Pluta

Fill in the missing letters to create a word from the poem.  
Then write the full word on the line.  
Be sure each word is spelled correctly.



1. **g**ritty

**clue:** dusty, sandy, gravelly

1. **g**ritty

# Preview

Please log in to download  
the printable version of this worksheet.

