

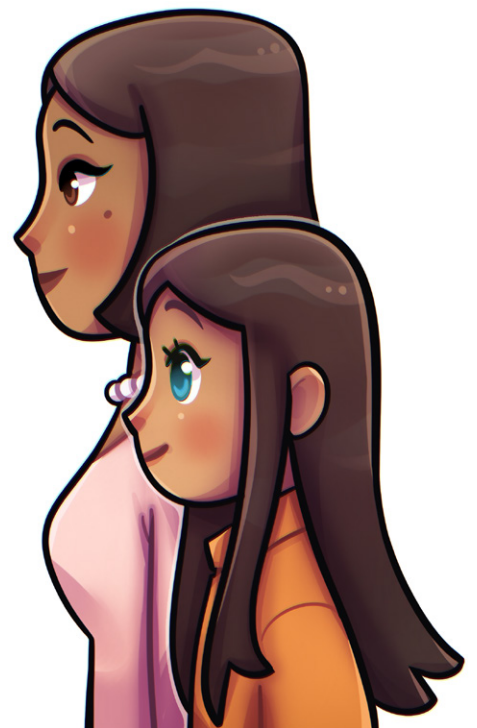
Name: _____

Family Features

By Liana Mahoney



I've got Grandma Gertie's smile,
And Uncle Joey's toes.
I've got Cousin Robert's hair,
And Mother's perky nose.
There's a dimple in my cheek –
I think it's Auntie Sue's –
And blinking in the mirror
Are Daddy's baby blues.
But no matter how I try,
I simply cannot see –
If all those parts belong to them,
Then what belongs to me?



Name: _____

Family Features

By Liana Mahoney



1. Draw lines to match the body part with the family member who shares the same feature.

Uncle Joey	nose
Grandma Gertie	toes
Mother	mouth
Aunt Sue	hair
Cousin Robert	dimple

2. Lines 7 and 8 read:

*And blinking in the mirror
Are Daddy's baby blues.*

What does this mean? How do you know?

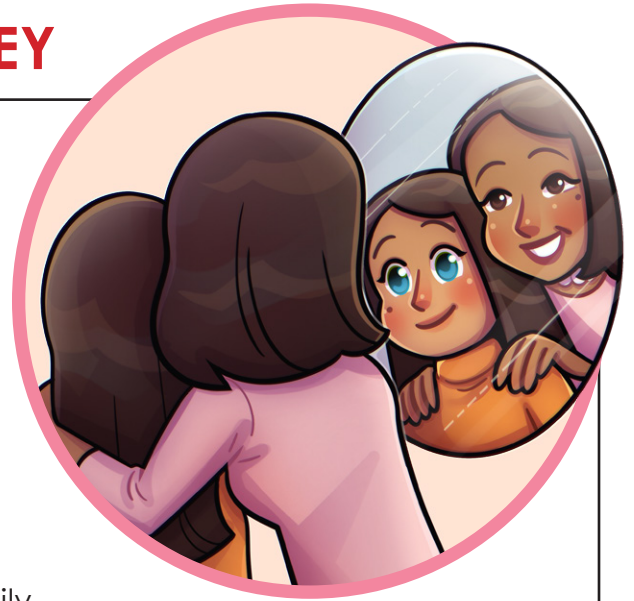
3. What does this poem teach us?
- a. Our relatives do not usually look like us.
 - b. We sometimes have the same body features as the people we're related to.
 - c. Children are usually shorter than their parents.
 - d. Children should dress like other members of their family.

Challenge: On the back of this paper, describe some of the features you share with other members of your family.

ANSWER KEY

Family Features

By Liana Mahoney



1. Draw lines to match the body part with the family member who shares the same feature.

Uncle Joey	toes	nose
Grandma Gertie	mouth	toes
Mother	hair	mouth
Aunt Sue	dimple	hair
Cousin Robert	nose	dimple

2. Lines 7 and 8 read:

*And blinking in the mirror
Are Daddy's baby blues.*

What does this mean? How do you know?

“Baby blues” are blue eyes. You can tell because the poem says they’re blinking in the mirror.

3. What does this poem teach us?

a. Our relatives do not usually look like us.

b. We sometimes have the same body features as the people we’re related to.

c. Children are usually shorter than their parents.

d. Children should dress like other members of their family.

Challenge: On the back of this paper, describe some of the features you share with other members of your family.