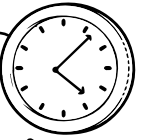
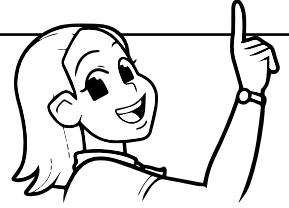


Name: _____

Days, Hours, Minutes, and Seconds



Converting Time



Compare times using the symbols $<$, $>$, or $=$.

a. 7 minutes 415 seconds

b. 110 hours 5 days

c. 475 minutes 8 hours

d. 720 seconds 12 minutes

e. 170 hours 7 days

f. 9 hours 550 minutes



Preview

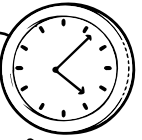
Please log in to download
the printable version of this worksheet.

m. Esmeralda spent 3 days in London, England. She also stayed in Paris, France for 40 hours. Which city did Esmeralda spend more time in?

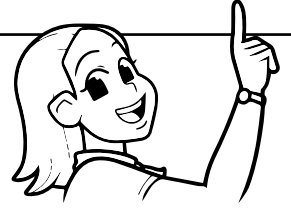
answer: _____

n. Loni was training for a triathlon. She swam for 1 hour. She biked for 70 minutes. She ran for 3,600 seconds. Which activity did she do the longest?

answer: _____



Converting Time



Compare times using the symbols $<$, $>$, or $=$.

a. 7 minutes 415 seconds

b. 110 hours 5 days

Preview

Please log in to download
the printable version of this worksheet.



- n. Loni was training for a triathlon. She swam for 1 hour. She biked for 70 minutes. She ran for 3,600 seconds. Which activity did she do the longest?

answer: biking