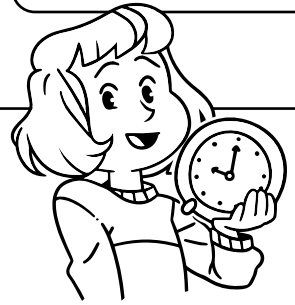


Name: _____

Converting Time



Compare times using the symbols $<$, $>$, or $=$.

a. 235 minutes 4 hours

b. 600 minutes 10 hours

c. 430 minutes 7 hours

d. 170 minutes 3 hours

e. 715 minutes 12 hours

f. 360 minutes 6 hours

A horizontal banner with a blue background on the left and white on the right. On the left, a superhero character with brown hair, wearing a blue suit and a red cape, is flying. A blue shield with the letters 'MJS' is on his chest. On the right, the word 'Preview' is written in large, bold, red letters. Below it, the text 'Please log in to download the printable version of this worksheet.' is written in a smaller, black font.

m. Keon spent 130 minutes taking care of the lawn. Alesha gardened for 2 hours. Who worked longer?

answer: _____

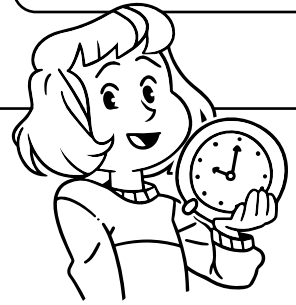
n. Caitlin flew to Japan. It took 13 hours to fly there. The flight back home took 750 minutes. Which flight was shorter?

answer: _____

ANSWER KEY

Hours and Minutes

Converting Time



Compare times using the symbols $<$, $>$, or $=$.

a. 235 minutes 4 hours

b. 600 minutes 10 hours

Preview

Please log in to download
the printable version of this worksheet.



- n. Caitlin flew to Japan. It took 13 hours to fly there. The flight back home took 750 minutes. Which flight was shorter?

answer: flight home