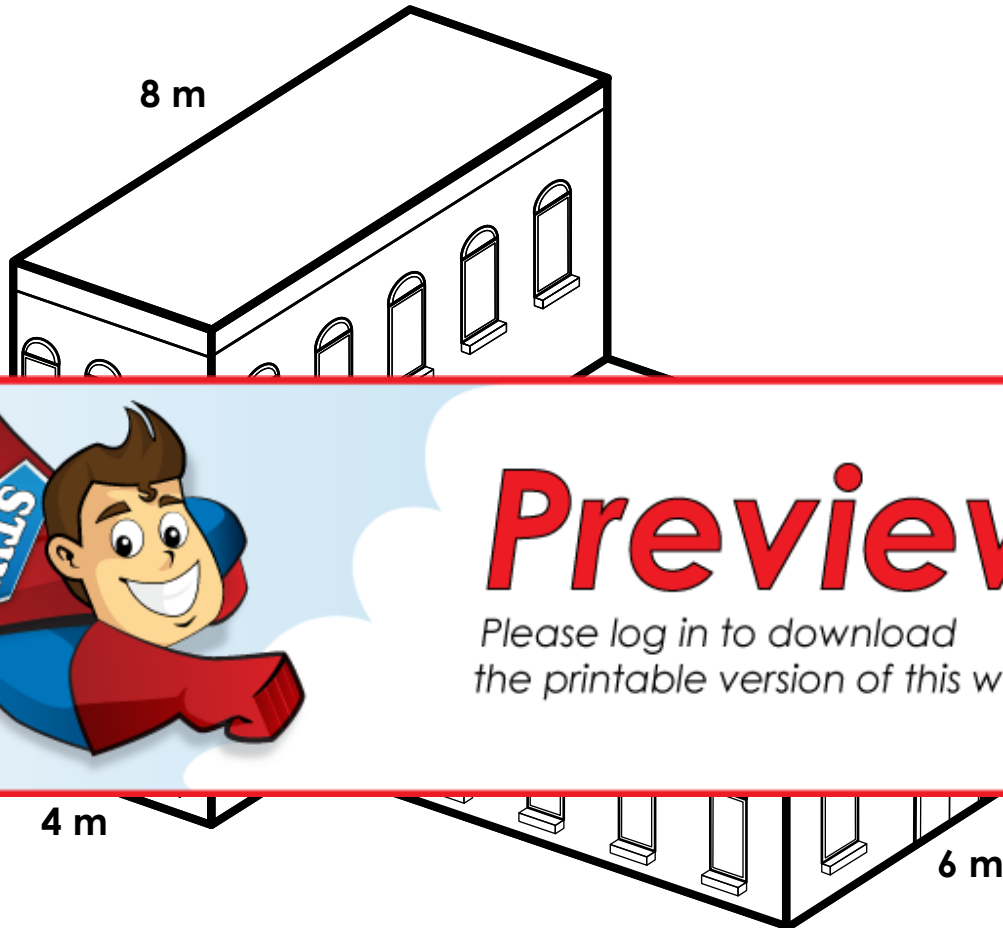


Name: \_\_\_\_\_

## Volume of the Building

Find the volume of the building. Calculate the volume of each building part. Then add the volumes of the two parts together.



# Preview

Please log in to download  
the printable version of this worksheet.

Volume of part 1:

$$\underline{\quad} \times \underline{\quad} \times \underline{\quad} = \underline{\quad} \text{ m}^3$$

Volume of part 2:

$$\underline{\quad} \times \underline{\quad} \times \underline{\quad} = \underline{\quad} \text{ m}^3$$

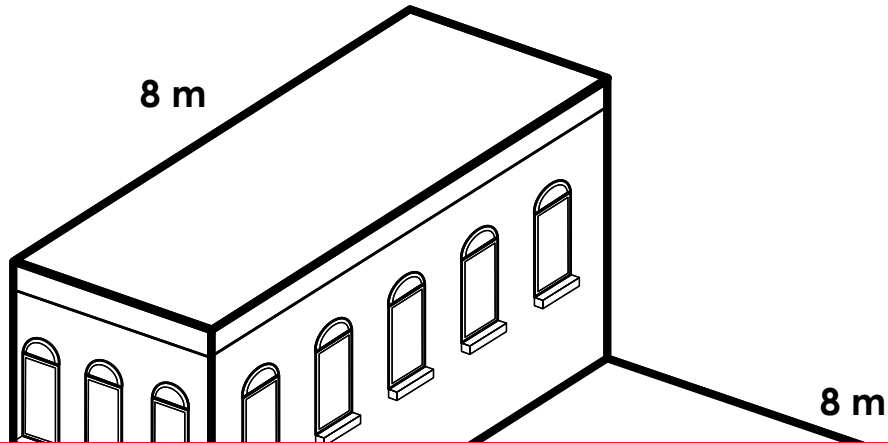
Volume of the building:

$$\underline{\quad} + \underline{\quad} = \underline{\quad} \text{ m}^3$$

# ANSWER KEY

## Volume of the Building

Find the volume of the building. Calculate the volume of each building part. Then add the volumes of the two parts together.



# Preview

Please log in to download  
the printable version of this worksheet.

