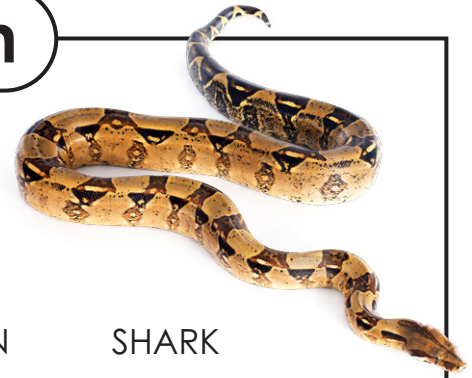


Name: _____

Reptile Word Search



Some of the animals below are reptiles. Some are not. Circle the animals that are reptiles. Cross out the animals that are not reptiles.

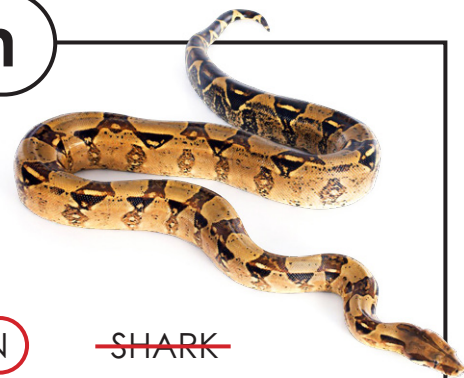
ALLIGATOR	COBRA	KOMODO DRAGON	SHARK
ANACONDA	CROCODILE	LOBSTER	SPIDER
BOA	EARTHWORM	PYTHON	TADPOLE
BULLDOG	GECKO	RATTLESNAKE	TOAD
BULLFROG	HERMIT CRAB	SALAMANDER	TORTOISE
CHAMELEON	IGUANA	SAND LIZARD	TURTLE

Now find only the reptiles in the puzzle. Animals that are not reptiles will not be hidden in the puzzle. Words are hidden →, ↓, and ↘.

S	K	O	M	O	D	O	D	R	A	G	O	N	Q	M
A	A	B	Q	C	I	G	U	A	N	A	L	L	I	G
C	L	N	T	U	R	T	L	E	A	N	D	T	G	C
O	B	L	D	S	A	O	G	E	C	K	O	O	U	H
P	R	G	I	L	E	M	C	Q	O	X	M	R	M	A
C	Y	H	E	G	I	K	M	O	N	S	H	T	N	M
O	S	T	R	M	A	Z	X	Q	D	P	R	O	P	E
B	A	C	H	B	E	T	A	W	A	I	T	I	Y	L
R	L	R	A	O	B	P	O	R	B	D	L	S	T	E
A	A	M	Q	A	N	W	P	R	D	J	E	E	H	O
P	R	A	T	T	L	E	S	N	A	K	E	G	E	N

SOLUTION

Reptile Word Search



Some of the animals below are reptiles. Some are not. Circle the animals that are reptiles. Cross out the animals that are not reptiles.

ALLIGATOR

COBRA

KOMODO DRAGON

~~SHARK~~

ANACONDA

CROCODILE

~~LOBSTER~~

~~SPIDER~~

BOA

~~EARTHWORM~~

PYTHON

~~TADPOLE~~

~~BULLDOG~~

GECKO

RATTLESNAKE

~~TOAD~~

~~BULLFROG~~

~~HERMIT CRAB~~

~~SALAMANDER~~

TORTOISE

CHAMELEON

IGUANA

SAND LIZARD

TURTLE

Now find only the reptiles in the puzzle. Animals that are not reptiles will not be hidden in the puzzle. Words are hidden →, ↓, and ↘.

